

QFlash User Guide

Ver. QFlash_User_Guide_V3.2

Date: 2020-07-30

Status: Released



Our aim is to provide customers with timely and comprehensive service. For any assistance, please contact our company headquarters:

Quectel Wireless Solutions Co., Ltd.

Building 5, Shanghai Business Park Phase III (Area B), No.1016 Tianlin Road, Minhang District, Shanghai 200233, China

Tel: +86 21 5108 6236 Email: info@quectel.com

Or our local office. For more information, please visit: <http://www.quectel.com/support/sales.htm>.

For technical support, or to report documentation errors, please visit:

<http://www.quectel.com/support/technical.htm> or email to support@quectel.com.

GENERAL NOTES

QUECTEL OFFERS THE INFORMATION AS A SERVICE TO ITS CUSTOMERS. THE INFORMATION PROVIDED IS BASED UPON CUSTOMERS' REQUIREMENTS. QUECTEL MAKES EVERY EFFORT TO ENSURE THE QUALITY OF THE INFORMATION IT MAKES AVAILABLE. QUECTEL DOES NOT MAKE ANY WARRANTY AS TO THE INFORMATION CONTAINED HEREIN, AND DOES NOT ACCEPT ANY LIABILITY FOR ANY INJURY, LOSS OR DAMAGE OF ANY KIND INCURRED BY USE OF OR RELIANCE UPON THE INFORMATION. ALL INFORMATION SUPPLIED HEREIN IS SUBJECT TO CHANGE WITHOUT PRIOR NOTICE.

DISCLAIMER

WHILE QUECTEL HAS MADE EFFORTS TO ENSURE THAT THE FUNCTIONS AND FEATURES UNDER DEVELOPMENT ARE FREE FROM ERRORS, IT IS POSSIBLE THAT THESE FUNCTIONS AND FEATURES COULD CONTAIN ERRORS, INACCURACIES AND OMISSIONS. UNLESS OTHERWISE PROVIDED BY VALID AGREEMENT, QUECTEL MAKES NO WARRANTIES OF ANY KIND, IMPLIED OR EXPRESS, WITH RESPECT TO THE USE OF FEATURES AND FUNCTIONS UNDER DEVELOPMENT. TO THE MAXIMUM EXTENT PERMITTED BY LAW, QUECTEL EXCLUDES ALL LIABILITY FOR ANY LOSS OR DAMAGE SUFFERED IN CONNECTION WITH THE USE OF THE FUNCTIONS AND FEATURES UNDER DEVELOPMENT, REGARDLESS OF WHETHER SUCH LOSS OR DAMAGE MAY HAVE BEEN FORESEEABLE.

COPYRIGHT

THE INFORMATION CONTAINED HERE IS PROPRIETARY TECHNICAL INFORMATION OF QUECTEL WIRELESS SOLUTIONS CO., LTD. TRANSMITTING, REPRODUCTION, DISSEMINATION AND EDITING OF THIS DOCUMENT AS WELL AS UTILIZATION OF THE CONTENT WITHOUT PERMISSION ARE FORBIDDEN. OFFENDERS WILL BE HELD LIABLE FOR PAYMENT OF DAMAGES. ALL RIGHTS ARE RESERVED IN THE EVENT OF A PATENT GRANT OR REGISTRATION OF A UTILITY MODEL OR DESIGN.

Copyright © Quectel Wireless Solutions Co., Ltd. 2020. All rights reserved.

About the Document

Revision History

Version	Date	Author	Description
1.0	2012-10-30	Yolanda YAO	Initial
1.1	2012-12-02	Yolanda YAO	Updated QFlash version to 1.1
1.2	2013-02-25	Karen REN	Updated QFlash version to 1.4
1.3	2013-05-20	Apple SONG/ Karen REN	Added USB port to upgrade firmware for U10 and UC20 module
1.4	2013-10-10	James CAI	1. Added the way to upgrade GCxx module 2. Updated QFlash version to 2.1
1.5	2013-11-05	Lucky DOU	Updated QFlash version to 2.2
1.6	2013-12-07	James CAI	Updated QFlash version to 2.3
1.7	2013-12-12	Lucky DOU	Updated QFlash version for UC15
1.8	2014-02-11	James CAI	Updated QFlash version to 2.4
1.9	2014-02-26	Steed NING	Updated QFlash version to 2.5
1.10	2014-03-18	James CAI	Updated QFlash version to 2.6
1.11	2014-04-24	Anny ZHANG	Updated QFlash version to 2.7
1.12	2014-06-25	James CAI	Updated QFlash version to 2.8
1.13	2014-08-13	Martin LI/ Roddick SUN	Updated QFlash version to 2.9
1.14	2014-10-08	Martin LI	Updated QFlash version to 3.0
1.15	2014-11-11	Mario XU	Updated QFlash version to 3.1
1.16	2015-03-05	Jesse ZHANG	Updated QFlash version to 3.3

1.17	2015-06-03	James CAI	Updated QFlash version to 3.4
1.18	2016-03-24	James CAI	Updated QFlash version to 3.5
1.19	2016-06-16	Sophie ZHU	<ol style="list-style-type: none"> 1. Added the way to upgrade Ecxx module 2. Updated QFlash version to 3.6
1.20	2016-09-26	Dylan LIU	<ol style="list-style-type: none"> 1. Added the way to load APP firmware 2. Updated QFlash version to 3.7
1.21	2017-07-24	Abby WU/ Upton XU	<ol style="list-style-type: none"> 1. Added the way to upgrade SCxx and AG35 modules 2. Updated QFlash version to 4.3
2.0	2017-09-28	Joy WANG	<ol style="list-style-type: none"> 1. Updated QFlash version to 4.4 2. Added information about applicable modules
2.1	2017-11-29	Joy WANG	<ol style="list-style-type: none"> 1. Updated QFlash version to 4.5 2. Added the way to upgrade BC95 module
2.2	2018-01-03	Joy WANG	<ol style="list-style-type: none"> 1. Updated QFlash version to 4.6 2. Added a note about firmware downloading in Firehose mode for Ecxx modules
2.3	2018-04-25	Kitty WANG	Updated QFlash version to 4.7
2.4	2018-05-21	Kitty WANG	<ol style="list-style-type: none"> 1. Updated QFlash version to 4.8 2. Added notes about tool and firmware paths
2.5	2018-09-14	Kitty WANG	<ol style="list-style-type: none"> 1. Updated QFlash version to 4.9 2. Added the way to upgrade EM12, BC95-G, BC68 and BC66 modules
2.6	2018-12-25	Kitty WANG	<ol style="list-style-type: none"> 1. Updated QFlash version to 4.10 2. Added applicable module MC25, M25 and M26 3. For M26 and MC60 modules (MTK platform), added command line download method to upgrade firmware, in addition to the standard method. (Chapter 2.3.2)
2.7	2019-04-08	Anne QIU	<ol style="list-style-type: none"> 1. Updated QFlash version to 4.11 2. Updated the list of applicable modules (Chapter 1.2) 3. Added the log printing description of BC95-G (Chapter 2.3.1)
2.8	2019-07-03	Kawhi HE	<ol style="list-style-type: none"> 1. Updated QFlash version to 4.12 2. Added the way to upgrade EC200T module
2.9	2019-09-17	Anne QIU	<ol style="list-style-type: none"> 1. Updated QFlash version to 4.13 2. Added the applicable module AG15 3. Added the method of loading firmware file for OpenCPU modules (Chapter 2.2.1.2) 4. Added applicable module M66-OpenCPU of loading APP firmware (Chapter 2.2.2.1) 5. Added the method of loading APP firmware for M65-OpenCPU module (Chapter 2.2.2.2)

			6. Added abnormalities of M65 (Figure 23, 31, 38 and 45)
2.10	2019-11-12	Anne QIU	1. Updated QFlash version to 4.14 2. Added the method of upgrading BG95/BG77 module 3. Updated OpenCPU to QuecOpen
2.11	2019-12-19	Kawhi HE	1. Updated QFlash version to 4.15 2. Added the method of upgrading RG500Q module
3.0	2020-02-02	Kitty WANG	Updated QFlash version to 4.16
3.1	2020-06-01	Kidd CHEN	1. Updated QFlash version to 4.18 2. Added the method of upgrading RM500Q-GL and RG800H module
3.2	2020-07-30	Kidd CHEN	1. Updated QFlash version to 4.19 2. Added the method of upgrading RG801H module 3. Added the upgrading method for MBN function

Contents

About the Document.....	2
Contents	5
Figure Index	6
1 Introduction	8
1.1. OS and Version	8
1.2. Applicable Modules	8
1.3. About QFlash Tool.....	9
2 Firmware Upgrade Procedures	10
2.1. Configure Serial Port and Baud Rate	10
2.1.1. Set COM Port.....	11
2.1.1.1. COM Port Selection for Mxx/GCxx/BCxx Modules	11
2.1.1.2. COM Port Selection for UGxx	12
2.1.1.3. COM Port Selection for UCxx/ECxx/EGxx/Ex06/EM05/AGxx/BGxx/EM12/ RG500Q/RM500Q-GL	13
2.1.1.4. COM Port Selection for SCxx.....	14
2.1.1.5. COM Port Selection for RG800H/RG801H	15
2.1.2. Set Baud Rate.....	16
2.2. Load Firmware Files and APP Firmware	17
2.2.1. Load Firmware Files.....	17
2.2.2. Load APP Firmware for QuecOpen Modules.....	19
2.2.2.1. Load APP Firmware for MC60/M66.....	19
2.2.2.2. Load APP Firmware for M65	21
2.3. Upgrade Firmware	22
2.4. MBN Function	27
2.5. Abnormalities	31
2.5.1. Selected a Wrong Serial Port.....	31
2.5.2. Connected to an Occupied Serial Port	35
2.5.3. Selected an Unsupported Baud Rate	38
2.5.4. Selected an Invalid FW File	39
2.5.5. Power Supply is Abnormal	43
2.5.6. USB to RS-232 Converter Cable is Abnormal	46

Figure Index

Figure 1: About the Tool	9
Figure 2: Main Interface of QFlash	10
Figure 3: Select the Correct Serial Port for Mxx/GCxx/BCxx Modules.....	11
Figure 4: No Need to Select COM Port for UGxx	12
Figure 5: Select the USB DM Port for UCxx/ECxx/EGxx/Ex06/EM05/AGxx/BGxx/EM12/RG500Q/ RM500Q-GL.....	13
Figure 6: Select the HS-USB Diagnostics 9091 Port for SCxx.....	14
Figure 7: Select the Quectel DLoader Port for RG800H/RG801H	15
Figure 8: Select the Baud Rate	16
Figure 9: Select the File to Be Downloaded (Standard or QuecOpen Modules).....	17
Figure 10: Select the File to Be Downloaded (QuecOpen Modules).....	18
Figure 11: Select the .cfg File.....	19
Figure 12: Select the Module Type	20
Figure 13: Select the APP Firmware File for M65.....	21
Figure 14: Click the Start Button	22
Figure 15: Start Firmware Upgrade Automatically After Clicking “Start” Button	23
Figure 16: Start Firmware Upgrade after Manually Restarting the Module (M10/M66/M72/M80/M85/M95/ MC60).....	24
Figure 17: Start to Upgrade after Manually Restarting BC95	25
Figure 18: Firmware Upgraded Successfully.....	26
Figure 19: Select the Serial Port of BG96 Module.....	27
Figure 20: Select the File to be Downloaded.....	28
Figure 21: Select “MBN autosel function”	29
Figure 22: MBN Upgraded Successfully for BG96	30
Figure 23: Connected to a Wrong Serial Port (M10/M66/M72/M80/M85/M95/MC60)	31
Figure 24: Connected to a Wrong Serial Port (M65)	32
Figure 25: Connected to a Wrong Serial Port (GCxx)	32
Figure 26: Connected to a Wrong Serial Port (UCxx).....	33
Figure 27: Connected to a Wrong Serial Port (ECxx/AGxx/EG9x/Ex06/EM05/BGxx/EM12/RG500Q/ RM500Q-GL).....	33
Figure 28: Connected to a Wrong Serial Port (SCxx).....	34
Figure 29: Connected to a Wrong Serial Port (BCxx).....	34
Figure 30: Connected to an Occupied Serial Port (M10/M66/M72/M80/M85/M95/MC60)	35
Figure 31: Connected to an Occupied Serial Port (M65).....	36
Figure 32: Connected to an Occupied Serial Port (GCxx).....	36
Figure 33: Connected to an Occupied Serial Port (UCxx/ECxx/EG9x/Ex06/SCxx/EM05/AGxx/BGxx/ EM12/RG500Q/RM500Q-GL).....	37
Figure 34: Connected to an Occupied Serial Port (BCxx)	37
Figure 35: Selected an Unsupported Baud Rate (M10/M66/M72/M80/M85/M95/MC60)	38
Figure 36: Selected an Unsupported Baud Rate (GCxx)	39
Figure 37: Selected an Invalid FW File (M10/M66/M72/M80/M85/M95/MC60)	39
Figure 38: Selected an Invalid FW File (M65)	40

Figure 39: Selected an Invalid FW File (GCxx)	40
Figure 40: Selected an Invalid FW File (UCxx).....	41
Figure 41: Selected an Invalid FW File (ECxx/EG9x).....	41
Figure 42: Selected an Invalid FW File (Ex06/AGxx/BG96/EM12)	42
Figure 43: Selected an Invalid FW File (EM05)	42
Figure 44: Abnormal Power Supply (M10/M66/M72/M80/M85/M95/MC60).....	43
Figure 45: Abnormal Power Supply (M65)	43
Figure 46: Abnormal Power Supply (GCxx)	44
Figure 47: Abnormal Power Supply (UCxx/ECxx/EG9x/Ex06/EM05/AGxx/BGxx/EM12/RG500Q/ RM500Q-GL).....	44
Figure 48: Abnormal Power Supply (UGxx).....	45
Figure 49: Abnormal Power Supply (SCxx)	45
Figure 50: Abnormal Power Supply (BCxx)	46
Figure 51: Abnormal USB to RS-232 Converter Cable	46

1 Introduction

1.1. OS and Version

This document mainly introduces methods of upgrading the firmware with “QFlash” upgrade tool provided by Quectel. The tool can run on a PC without installation if the OS is among the ones listed below:

- Windows 7
- Windows 8
- Windows 10

Any newer version of the tool and notification thereof will be provided in advance.

NOTES

1. In Windows 10, please start *QFlash.exe* by right-clicking the icon and selecting “**Run as administrator**”.
2. The storage path of the tool and the firmware should NOT contain any space, and English characters are preferred.

1.2. Applicable Modules

QFlash is applicable to the following Quectel modules.

Table 1: Applicable Modules

LPWA Module Series	BCxx: BC95/ BC95-G/ BC68/ BC66
	BGxx: BG96/ BG95/ BG77
LTE Standard Module Series	ECxx: EC20 R2.0/ EC20 R2.1/ EC25/ EC21
	EG9x: EG91/ EG95

	EM05
LTE-A Module Series	Ex06: EP06/ EG06/ EM06
	EM12
Automotive Module Series	AGxx: AG35/ AG15
Smart Module Series	SCxx: SC20/ SC60
WCDMA Module Series	UCxx: UC15/ UC20
	UGxx: UG95/ UG96
GSM/GPRS/GNSS Module Series	Mxx: M10/ M66/ M72/ M80/ M85/ M95/ M65/ MC60
	GCxx: GC10
5G Module Series	RG500Q/ RM500Q-GL/ RG800H/ RG801H

NOTE

Quectel modules listed above may include multiple models. Please refer to the corresponding module specifications for more specific information.

1.3. About QFlash Tool

The QFlash tool developed by Quectel is shown as below.



Figure 1: About the Tool

2 Firmware Upgrade Procedures

The firmware is upgraded through the following three steps with QFlash.

Step 1: Set serial port and baud rate.

Step 2: Load firmware files.

Step 3: Upgrade the firmware.

The following chapters describe the details about how to use the tool to upgrade firmware.

2.1. Configure Serial Port and Baud Rate

After the QFlash tool is started, the main interface is shown as below.

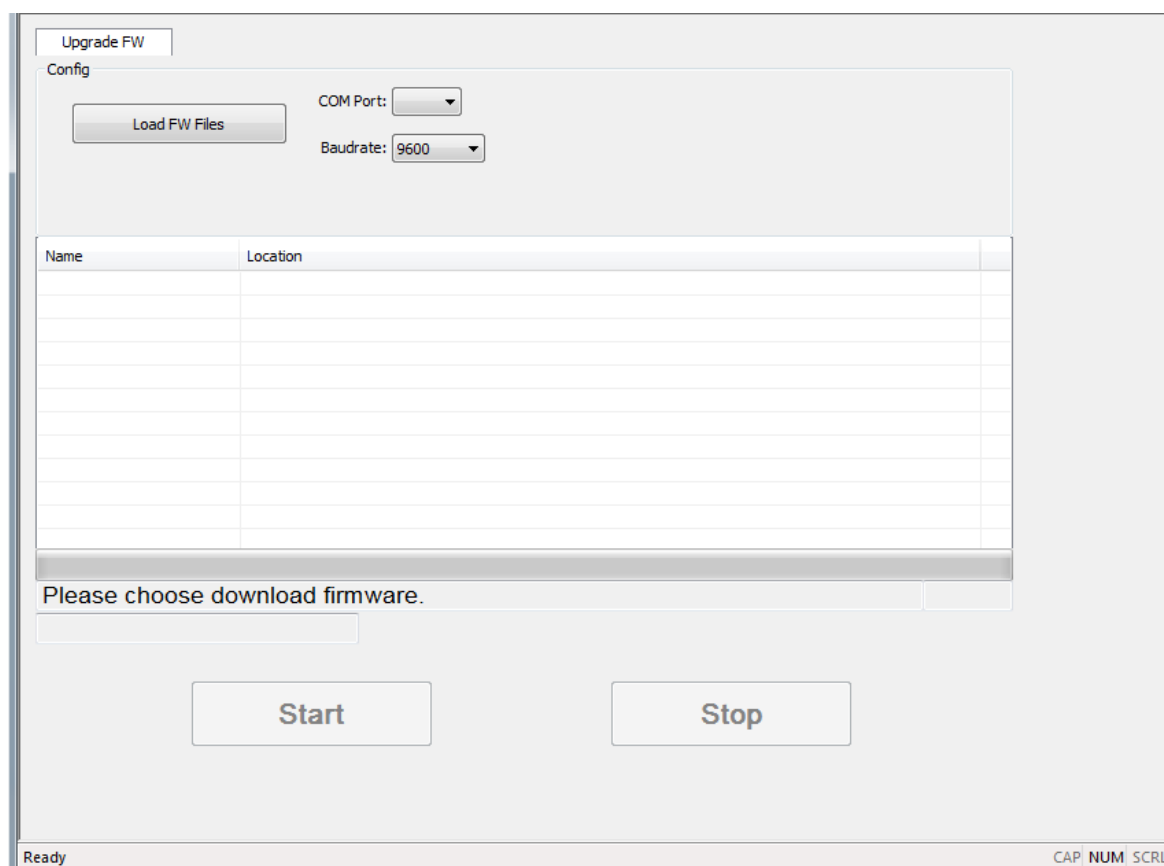


Figure 2: Main Interface of QFlash

2.1.1. Set COM Port

2.1.1.1. COM Port Selection for Mxx/GCxx/BCxx Modules

Click “**COM Port**” drop-down list to select the COM port through which the firmware will be upgraded, as shown in the following figure.

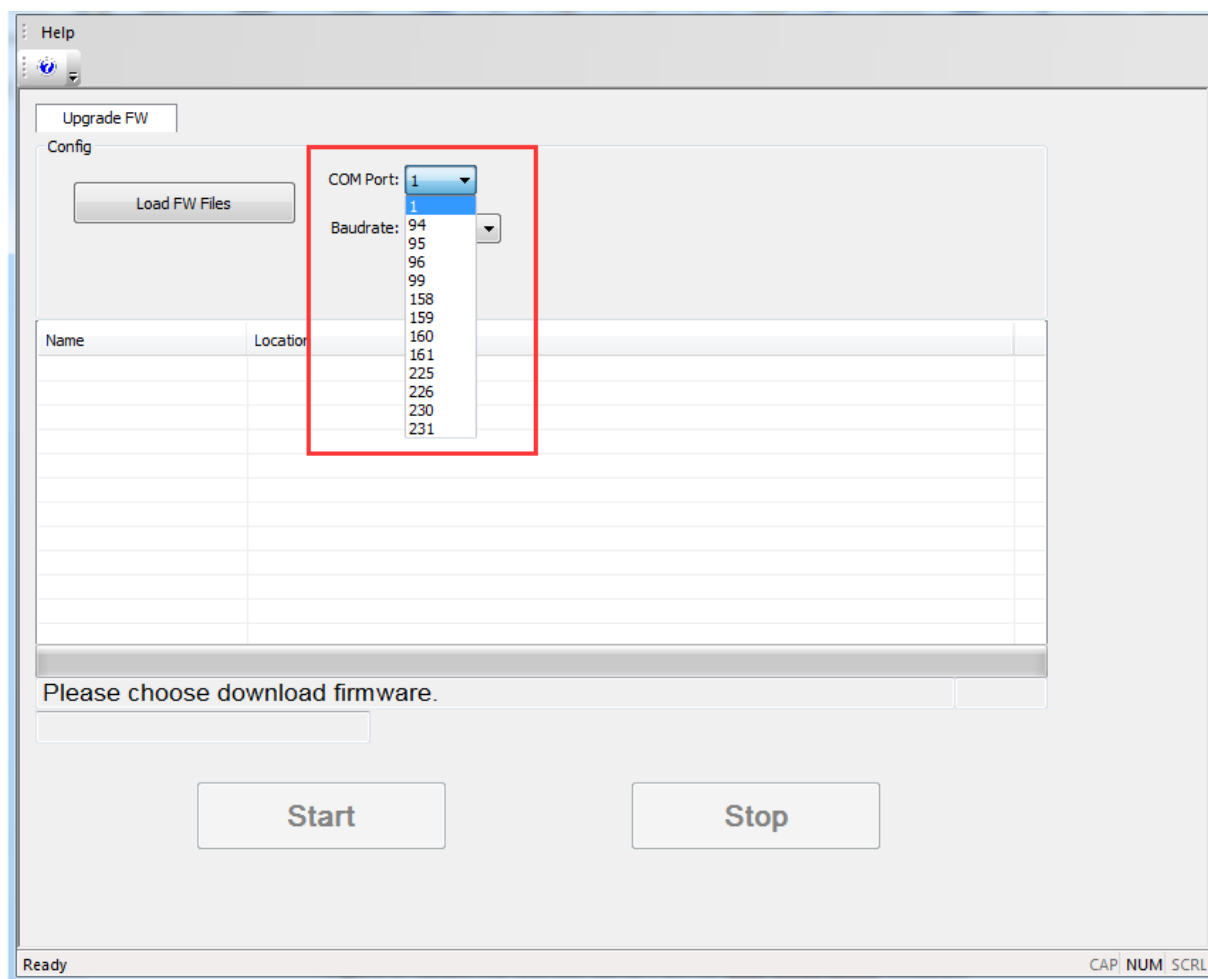


Figure 3: Select the Correct Serial Port for Mxx/GCxx/BCxx Modules

NOTES

1. For M10, M66, M72, M80, M85, M95 or MC60, the main UART is used to upgrade firmware. After the port is selected, please manually restart the module.
2. For M65 and GCxx modules, the USB port is used to upgrade firmware, and the module will be automatically restarted after “**Start**” button is clicked.
3. For BC95 module, the main UART is used to upgrade firmware. After the port is selected, please click the “**Start**” button and wait for the prompt “**Module Reset By Hand**”, and then manually restart

the module.

4. For BC66 module, the USB UART Ch A is used to upgrade firmware. After the port is selected, please click the **“Start”** button and wait for the prompt **“[INFO]Start connect with target,Please reset DUT...”**, and then manually restart the module.
5. For BC95-G and BC68 modules, the USB UART Ch A is used to upgrade firmware. After the port is selected, please click the **“Start”** button and wait for the prompt **“reset”**, and then manually restart the module.

2.1.1.2. COM Port Selection for UGxx

For UGxx, the USB port is used to upgrade firmware, and it can be selected automatically. When firmware files are uploaded, “USB” will be displayed in gray in **“COM Port”** drop-down list. The module needs to be turned off before **“Start”** is clicked. After clicking **“Start”**, please turn on the module within 10 seconds. The interface is shown in the following figure.

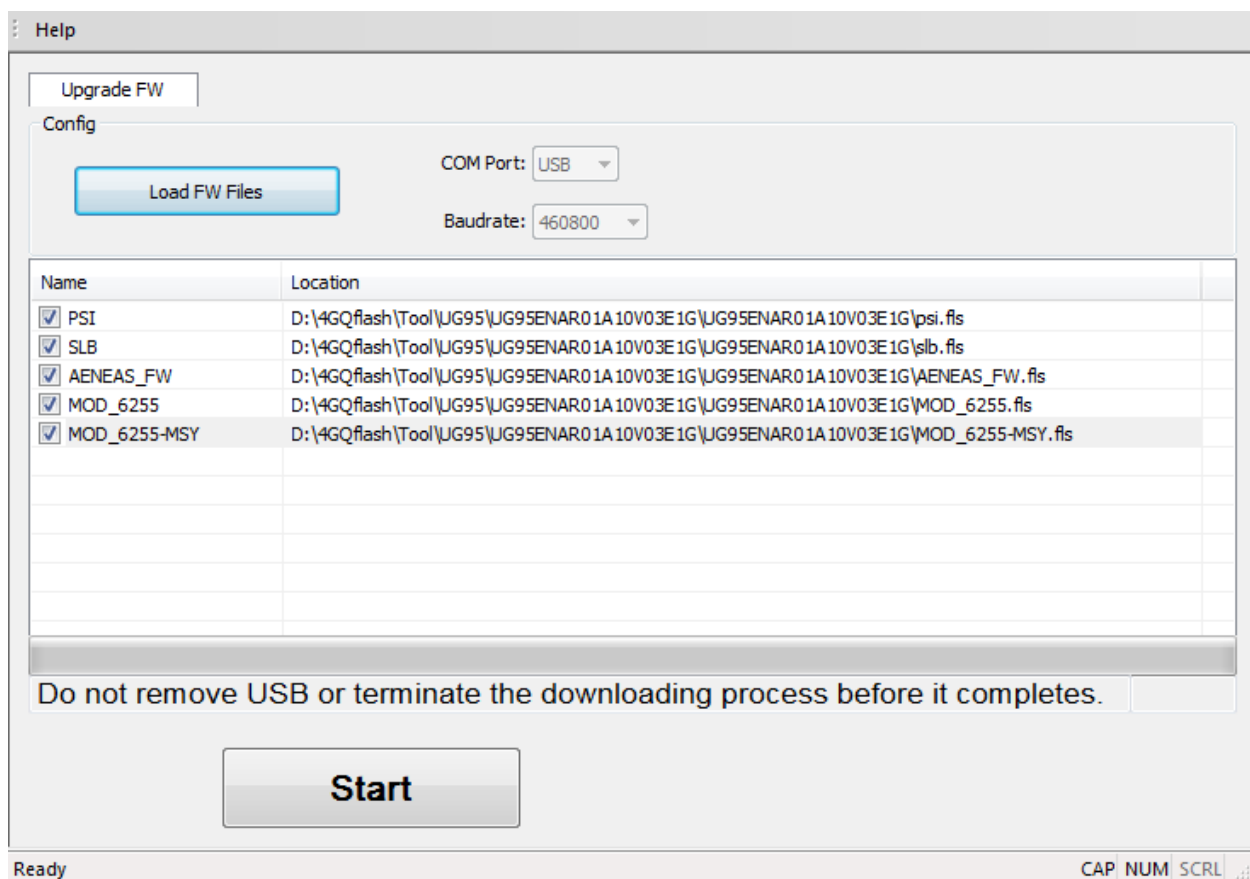


Figure 4: No Need to Select COM Port for UGxx

2.1.1.3. COM Port Selection for UCxx/ECxx/EGxx/Ex06/EM05/AGxx/BGxx/EM12/RG500Q/

RM500Q-GL

For UCxx, ECxx, EGxx, Ex06, EM05, AGxx, BGxx, EM12, RG500Q or RM500Q-GL, the USB DM port can be used for firmware upgrade. Click **“COM Port”** drop-down list and select the USB DM port for upgrade, as shown in the following figure.

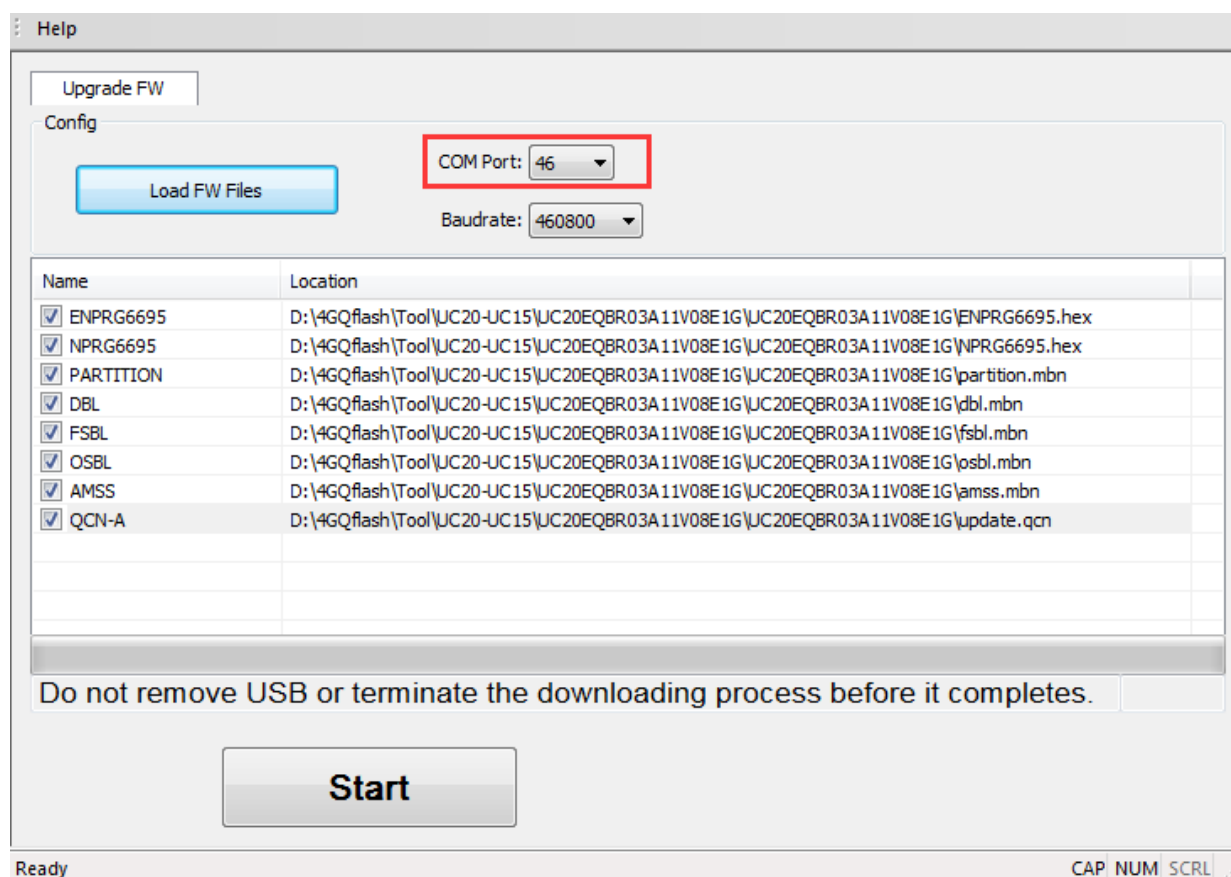


Figure 5: Select the USB DM Port for
UCxx/ECxx/EGxx/Ex06/EM05/AGxx/BGxx/EM12/RG500Q/RM500Q-GL

2.1.1.4. COM Port Selection for SCxx

For SCxx, the HS-USB Diagnostics 9091 port can be used for firmware upgrade. Click “**COM Port**” drop-down list and select the HS-USB Diagnostics 9091 port for upgrade, as shown in the following figure.

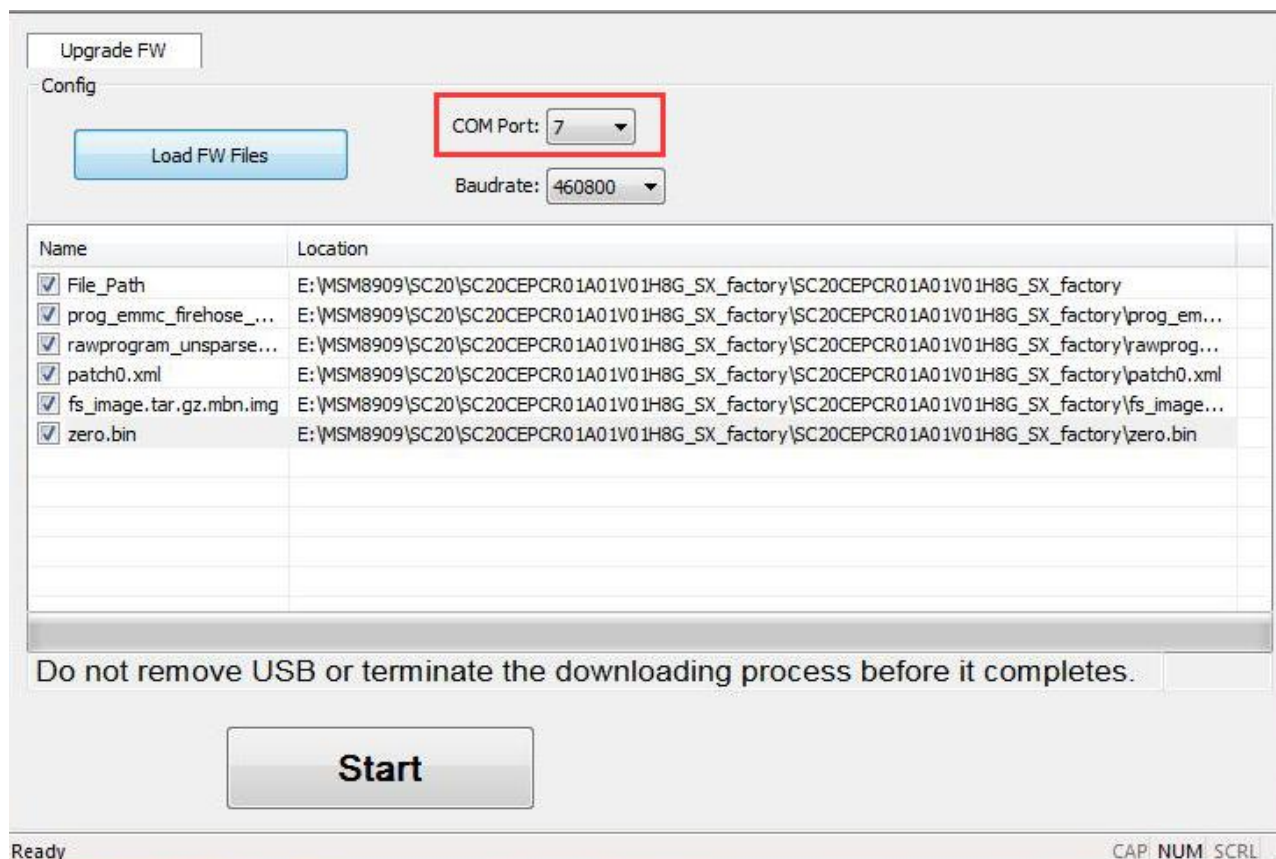


Figure 6: Select the HS-USB Diagnostics 9091 Port for SCxx

2.1.1.5. COM Port Selection for RG800H/RG801H

For RG800H or RG801H, by default, the Quectel DLoader Port is used for firmware upgrades. Click the “**COM Port**” drop-down list and select the port to upgrade, as shown in the following figure.

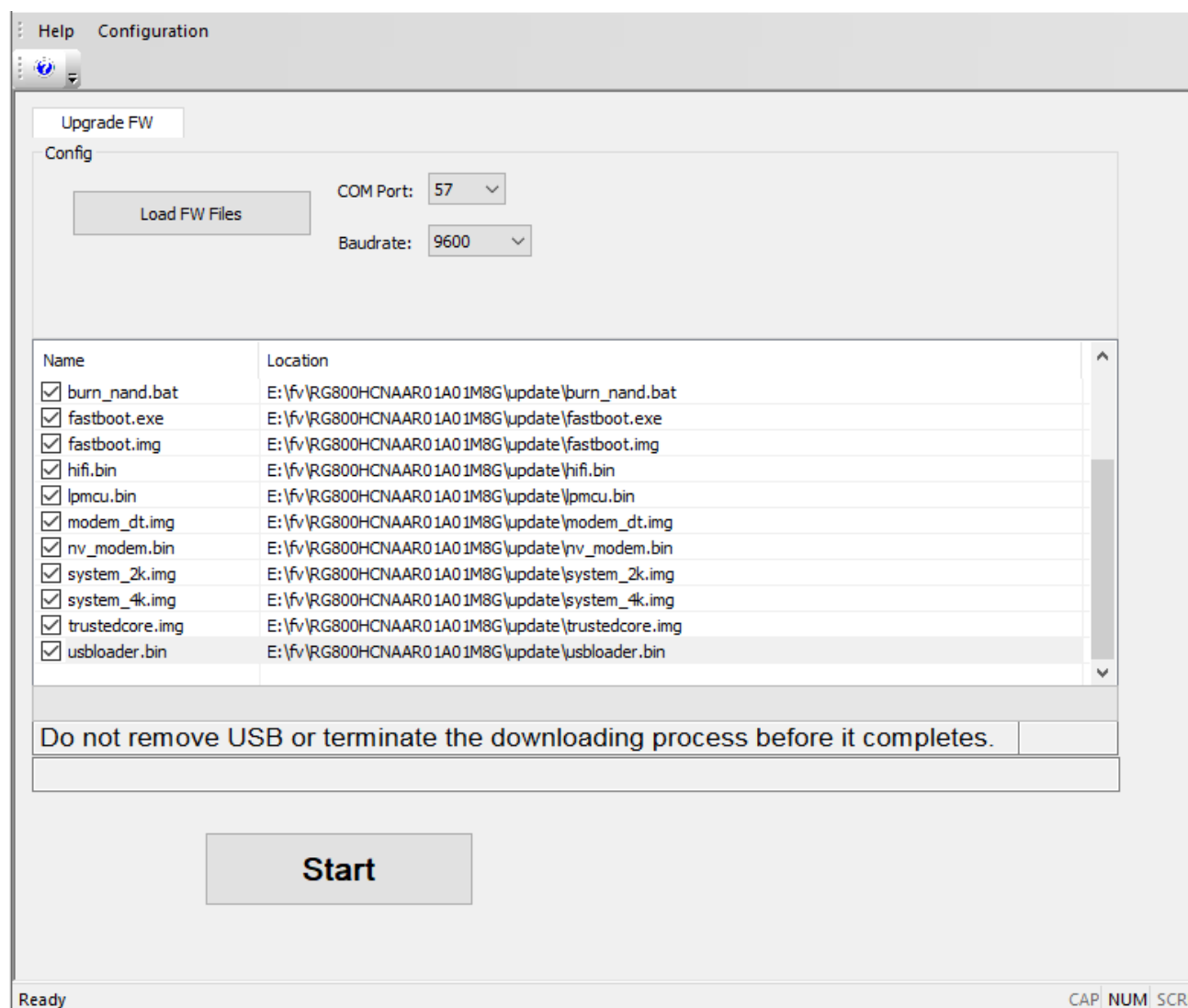


Figure 7: Select the Quectel DLoader Port for RG800H/RG801H

NOTES

1. Before upgrading the firmware package through Quectel DLoader Port, short-circuit BOOT and GND of RG800H or RG801H.
2. For RG800H or RG801H, the Quectel DLoader Port is used by default to upgrade the firmware package. If you need to use the HUAWEI Mobile Connect - DownLoad port, you need to use the *MainConfig.ini*. In the configuration file, change the parameter of HS_DL_MODE to 0.

2.1.2. Set Baud Rate

Click the “**Baudrate**” drop-down list and select an appropriate baud rate, as shown in the following figure.

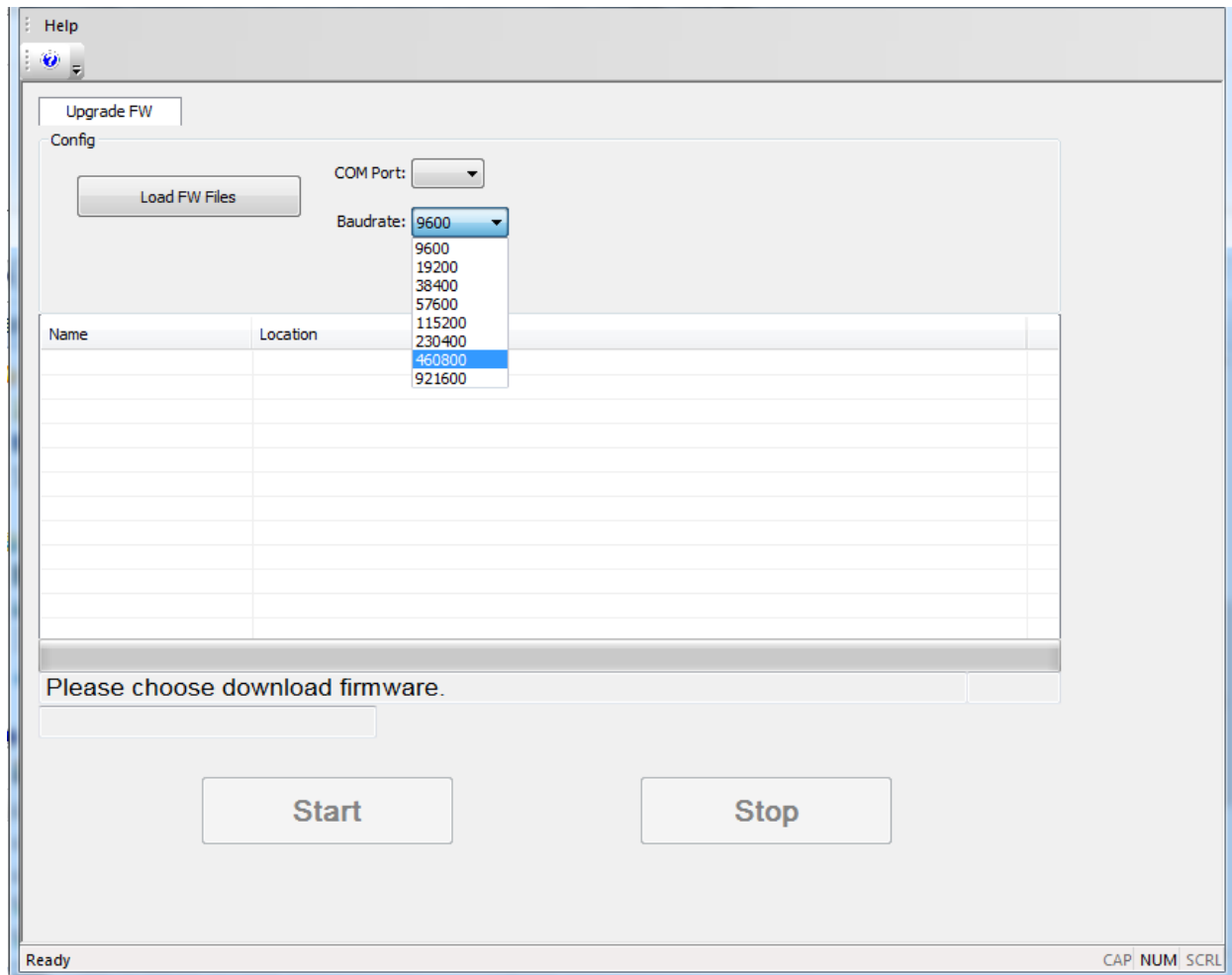


Figure 8: Select the Baud Rate

NOTES

1. There are different baud rate values to be selected and the hardware environment determines whether a specified baud rate can be supported. If the baud rate is not supported, an error message will be returned.
2. Please set baud rate to 921600 when upgrading firmware for GCxx or M65 modules, 9600 for BCxx modules, and 460800 for other Quectel modules. Other baud rates may lead to an upgrading failure.
3. When upgrading firmware for BCxx modules, the baud rate is 9600 by default.
4. Baud rate setting is unnecessary for virtual USB ports.

2.2. Load Firmware Files and APP Firmware

2.2.1. Load Firmware Files

The steps in this chapter are performed to load firmware files for standard and QuecOpen modules.

NOTE

The storage path of the firmware files should NOT contain any spaces, and English characters are preferred.

Step 1: Click the button “Load FW Files”.

Step 2: Select the *.txt*, *.cfg*, *.mbn*, *.lod*, *.fls*, *.fwpkg*, *.zip* or *.bat* file which needs to be downloaded to the module.

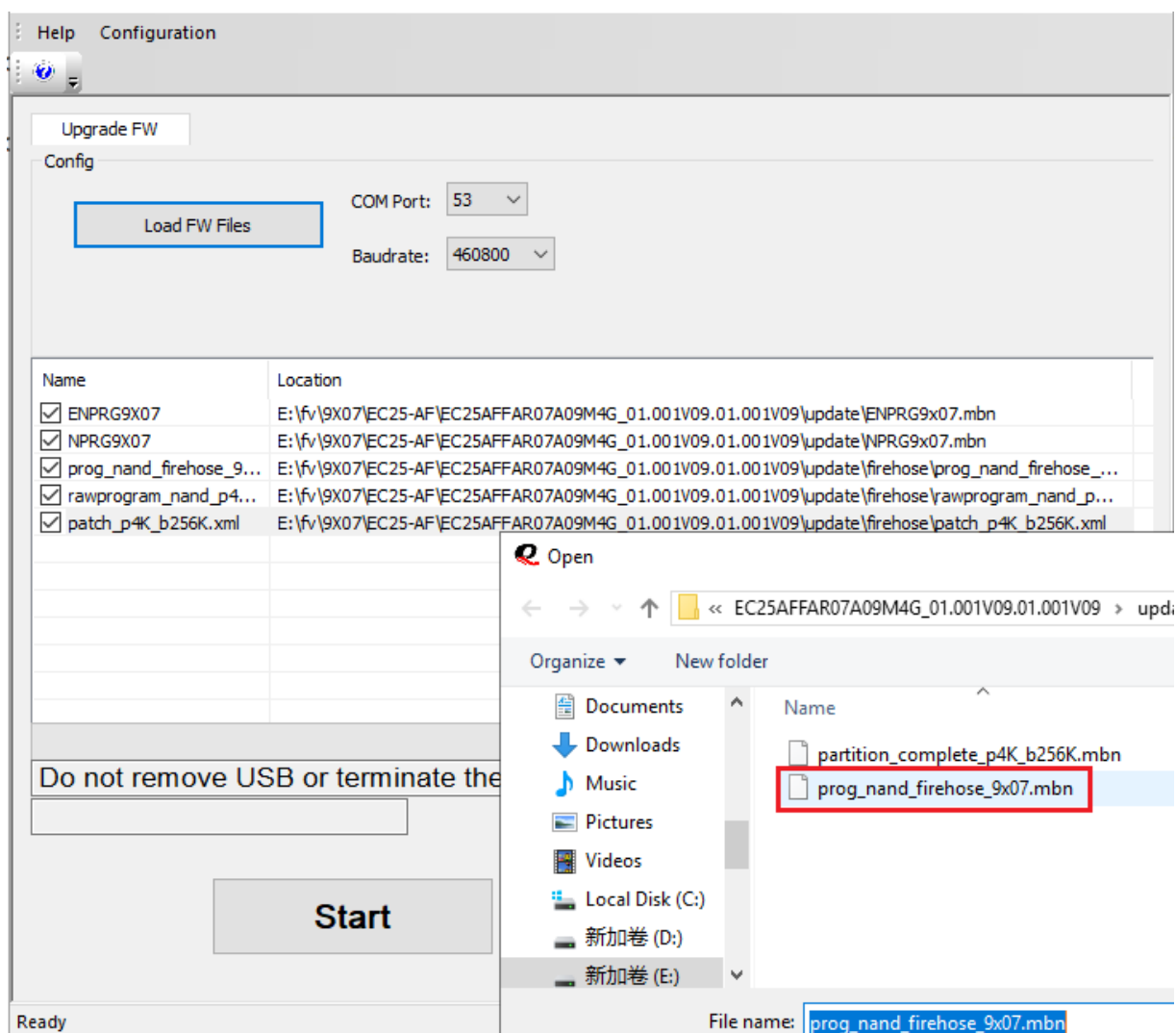


Figure 9: Select the File to Be Downloaded (Standard or QuecOpen Modules)

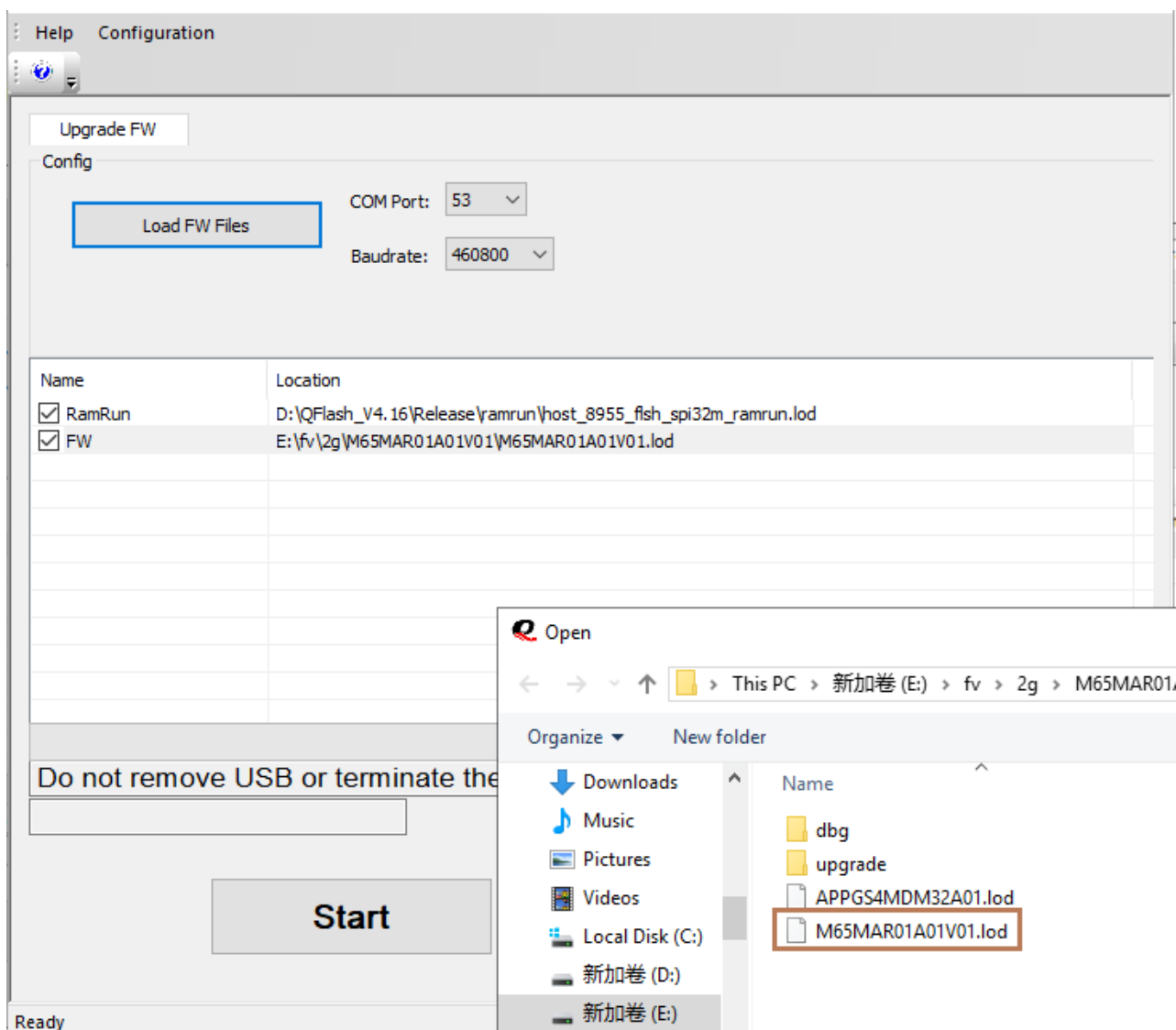


Figure 10: Select the File to Be Downloaded (QuecOpen Modules)

NOTES

1. When *Firehose* folder exists in the firmware package, the firmware will be upgraded in Firehose mode by default, and, to upgrade in Sahara mode, please check “**Sahara only**” under “**Configuration**” in the menu bar; the upgrade will be processed in Sahara mode by default if there is no *Firehose* folder in the firmware package.
2. For RG800H or RG801H, please select a firmware file with *.bat* extension.

2.2.2. Load APP Firmware for QuecOpen Modules

The steps in this chapter are performed to load APP firmware for QuecOpen modules.

NOTE

The storage path of the APP firmware should NOT contain any spaces, and English characters are preferred.

2.2.2.1. Load APP Firmware for MC60/M66

Step 1: Click the button “**Load FW Files**”, and select the `.cfg` file which needs to be downloaded to the module.

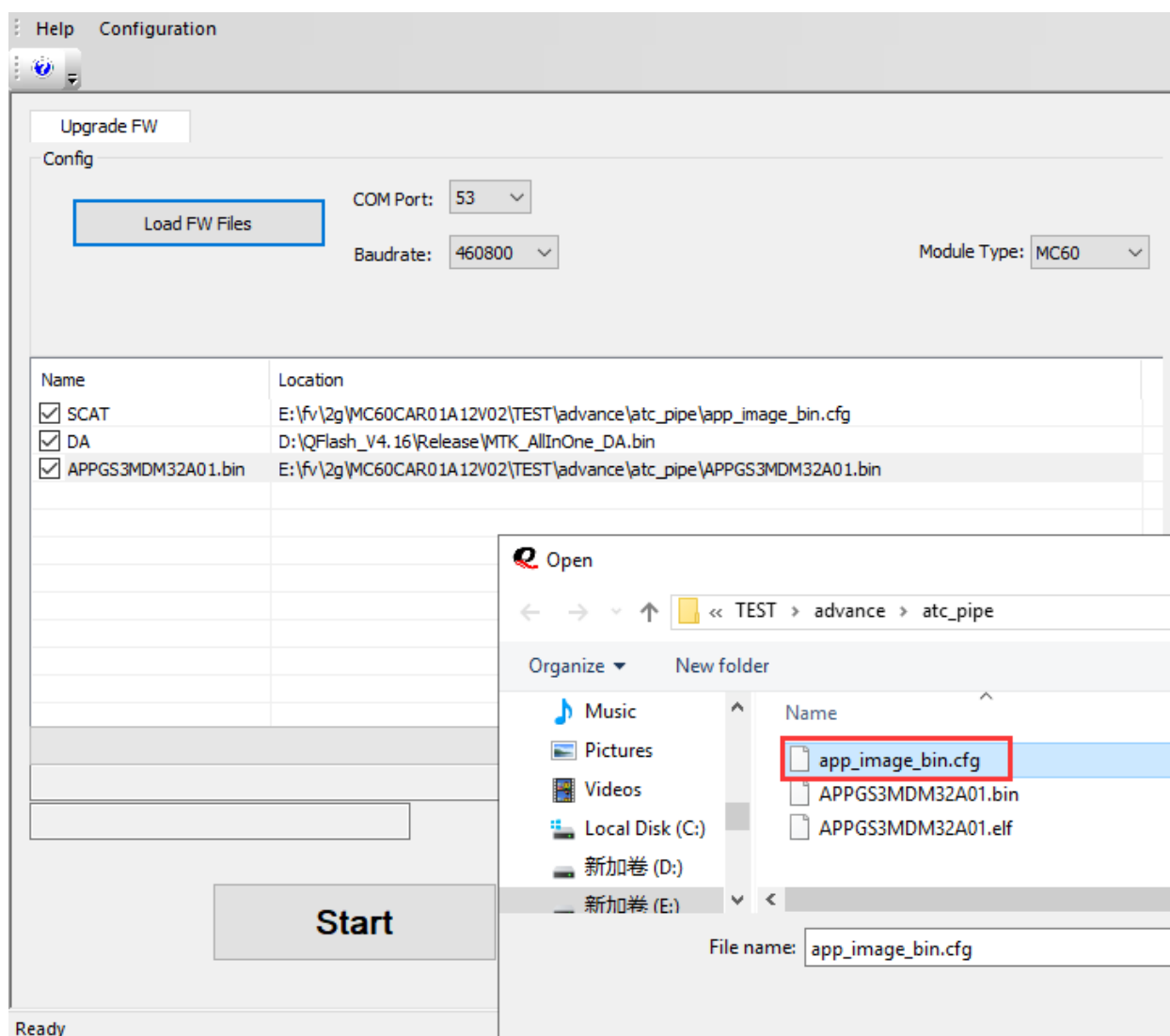


Figure 11: Select the `.cfg` File

Step 2: Click the “**Module Type**” drop-down list and select the module type.

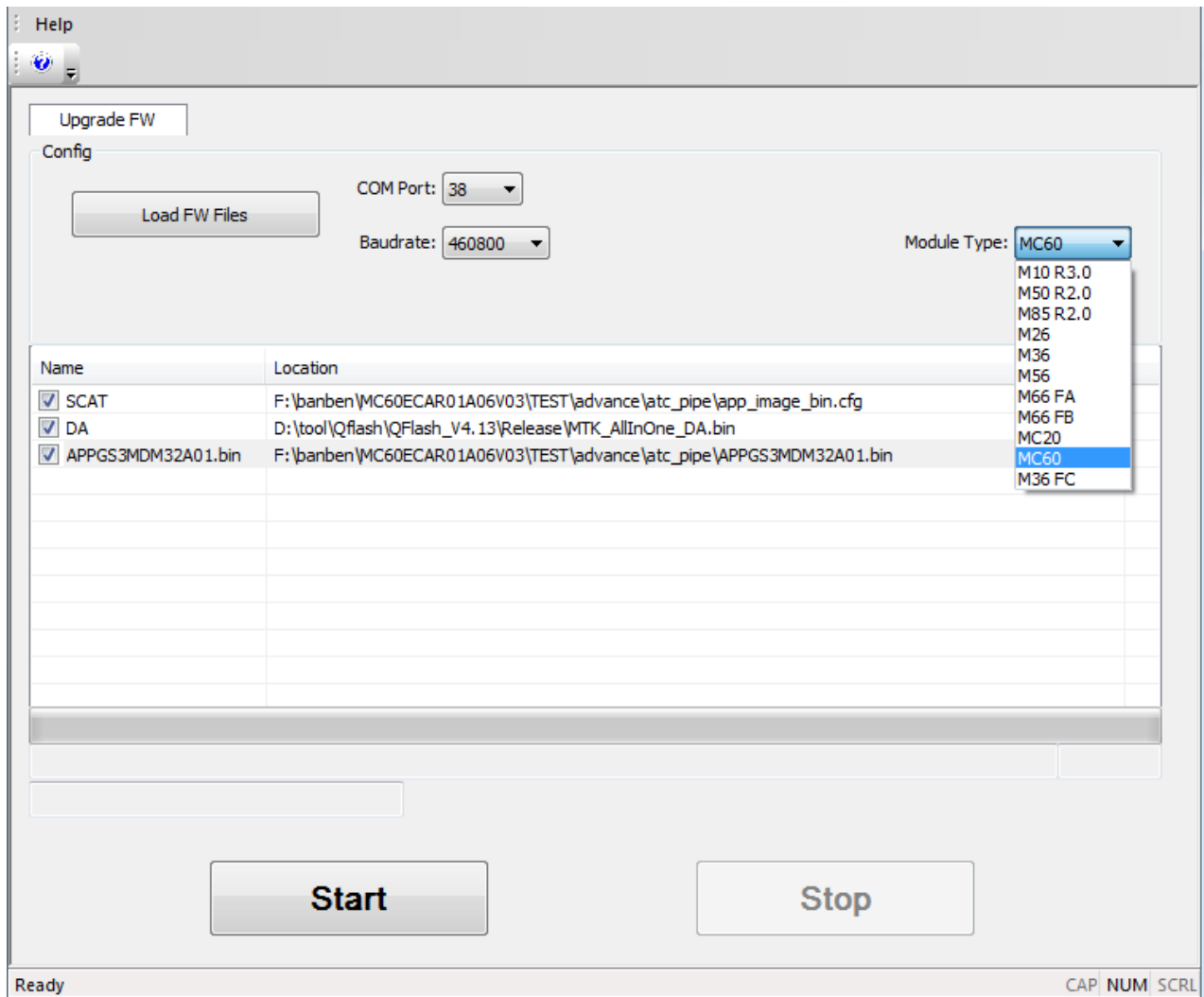


Figure 12: Select the Module Type

2.2.2.2. Load APP Firmware for M65

Click the button “**Load FW Files**”, and select the .lod file which needs to be downloaded to the module.

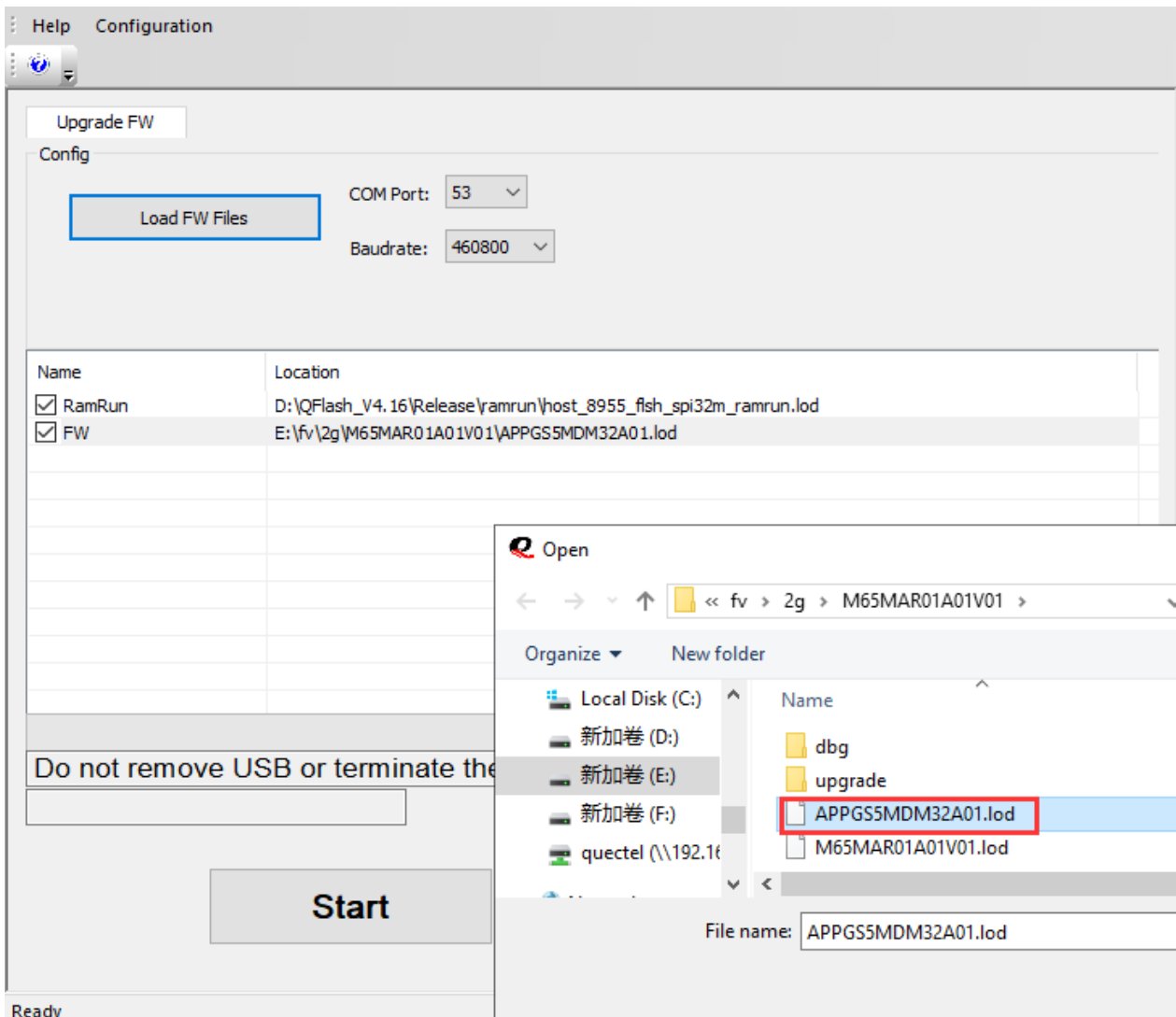


Figure 13: Select the APP Firmware File for M65

2.3. Upgrade Firmware

Step 1: Click the “Start” button.

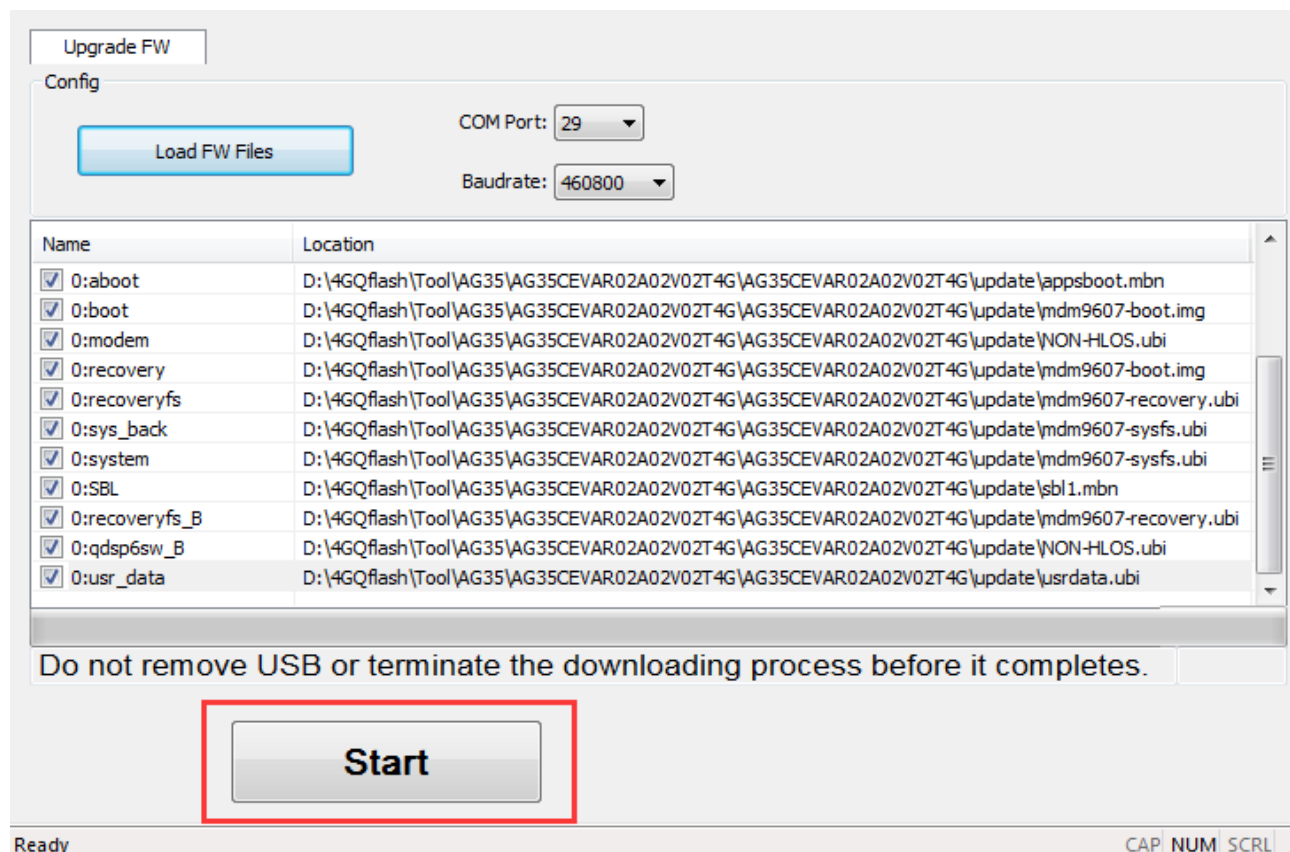


Figure 14: Click the Start Button

NOTES

1. Please note that there is no “Stop” button while upgrading firmware for GCxx, UCxx, UGxx, ECxx, EG9x, Ex06, SCxx, BCxx, EM05, AGxx, BG96 or EM12, as shown above. In this case, it is NOT permitted to stop the upgrading process, and please do NOT remove the USB or terminate the downloading process before the upgrading is completed.
2. For ECxx modules, when *Firehose* folder exists in the firmware package, the firmware will be upgraded in Firehose mode by default, and, to upgrade in Sahara mode, please check “**Sahara only**” under “**Configuration**” in the menu bar; the upgrade will be processed in Sahara mode by default if there is no *Firehose* folder in the firmware package.
3. If the upgrade in Firehose mode fails after many attempts, please try to turn off the anti-virus software and firewall or uninstall them and, then, try again.

Step 2: Restart the module to enable automatic firmware upgrade.

- (1) GCxx, UCxx, UGxx, ECxx, EG9x, Ex06, SCxx, EM05, AGxx, BGxx, EM12, M65, RG500Q, RM500Q-GL, RG800H and RG801H modules will be restarted automatically after clicking the “**Start**” button, so there is no need to restart the modules manually. Please refer to the following figure.

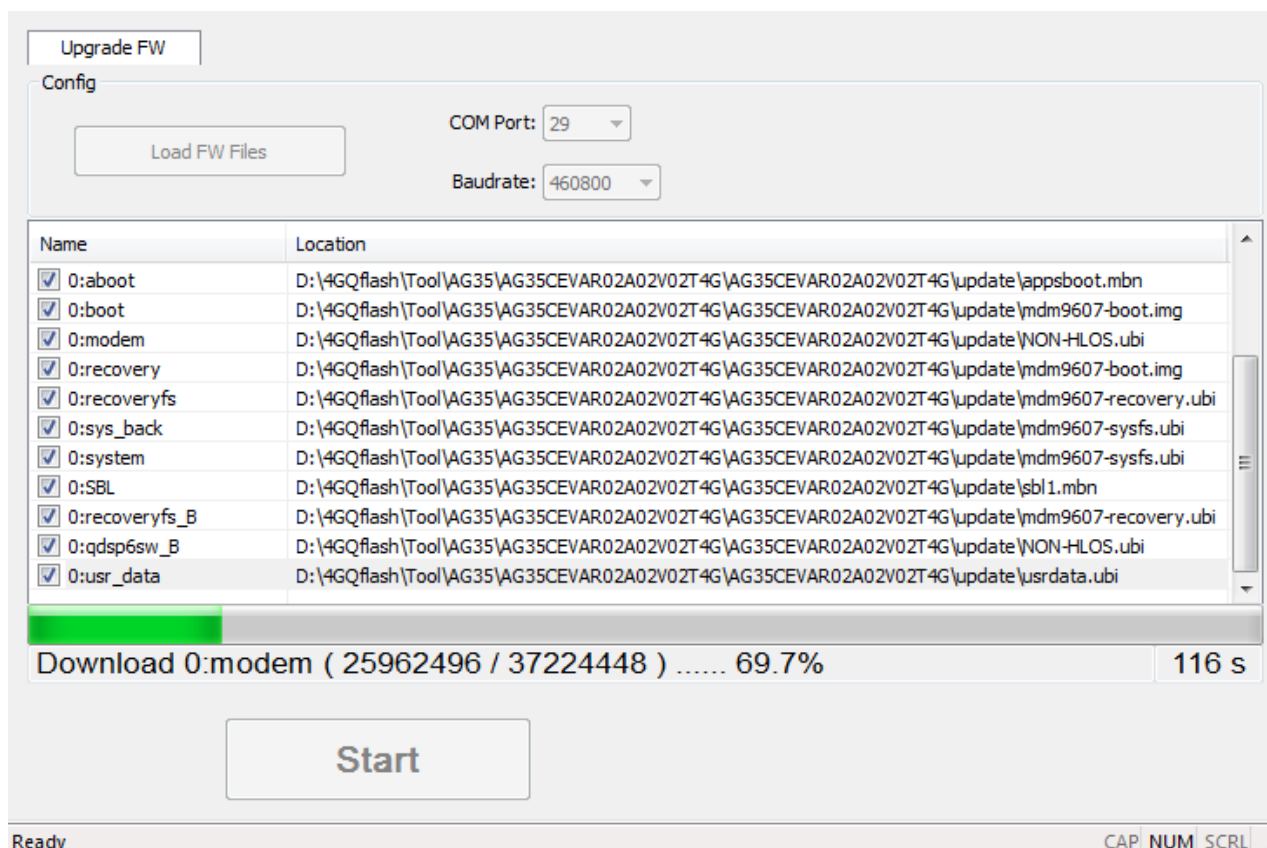
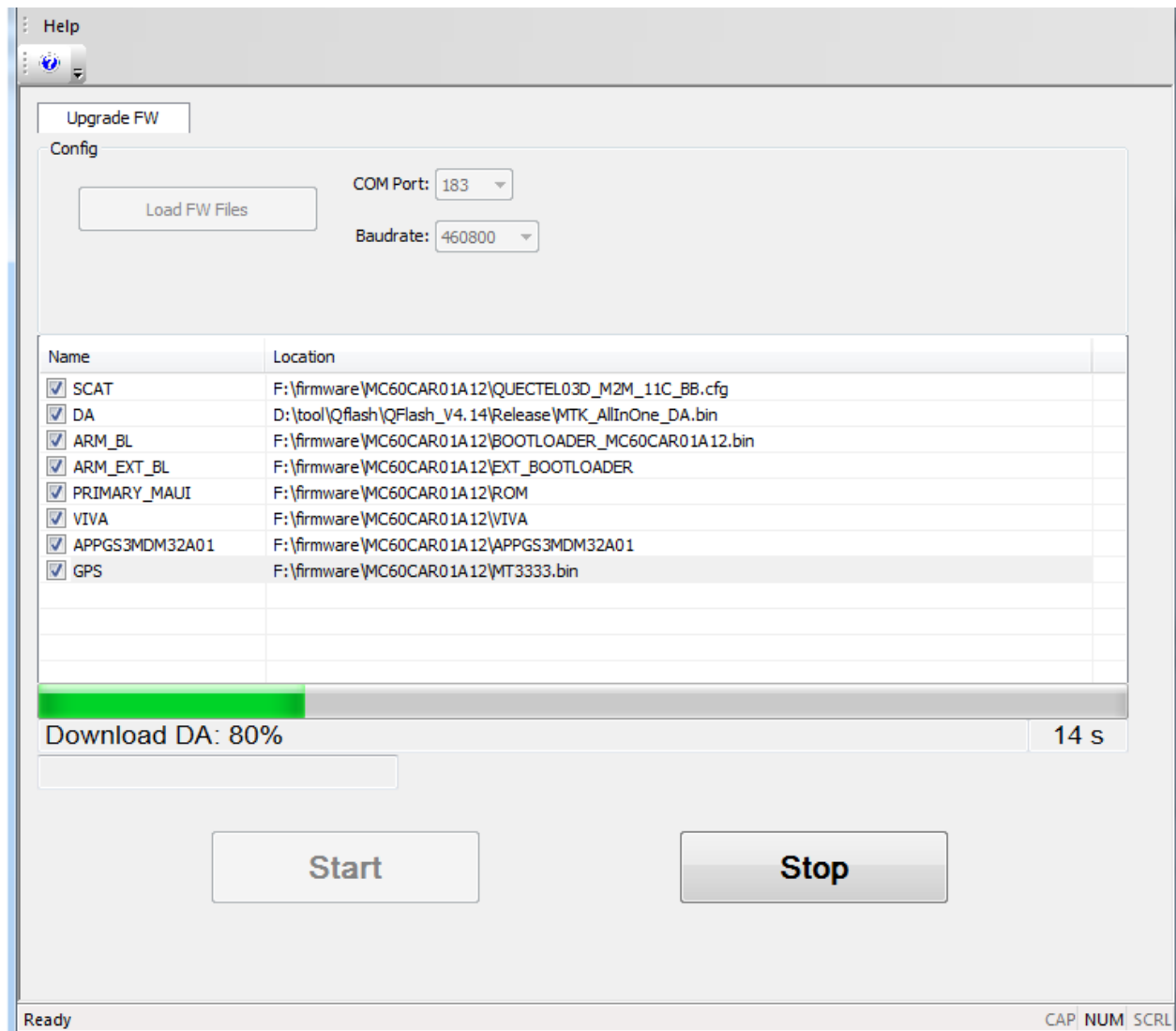


Figure 15: Start Firmware Upgrade Automatically After Clicking “Start” Button

NOTES

- For GCxx, UCxx, UGxx, ECxx, EG9x, Ex06, SCxx, EM05, AGxx, BG96, EM12, M65, RG500Q, RM500Q-GL, RG800H or RG801H, if there is no EVB for module firmware upgrade, please drive the PWRKEY pin to a low level after clicking the “**Start**” button in 30 seconds.
- RG800H or RG801H only supports upgrading in 64-bit operating system.
- For RG800H or RG801H modules, during the upgrade process, if the PC is not configured with the adb environment, the tool will automatically install and configure the adb environment variables.

- (2) For M10, M66, M72, M80, M85, M95, MC60 or BC95, switch the D/L to “**ON**” on EVB within 30 seconds after clicking “**Start**” button, and then manually restart the module. In this way, as shown in the following figures, the firmware upgrade will be started.



**Figure 16: Start Firmware Upgrade after Manually Restarting the Module
(M10/M66/M72/M80/M85/M95/MC60)**

Step 3: “PASS” will be shown on the interface after the firmware has been successfully upgraded, as shown in the following figure.

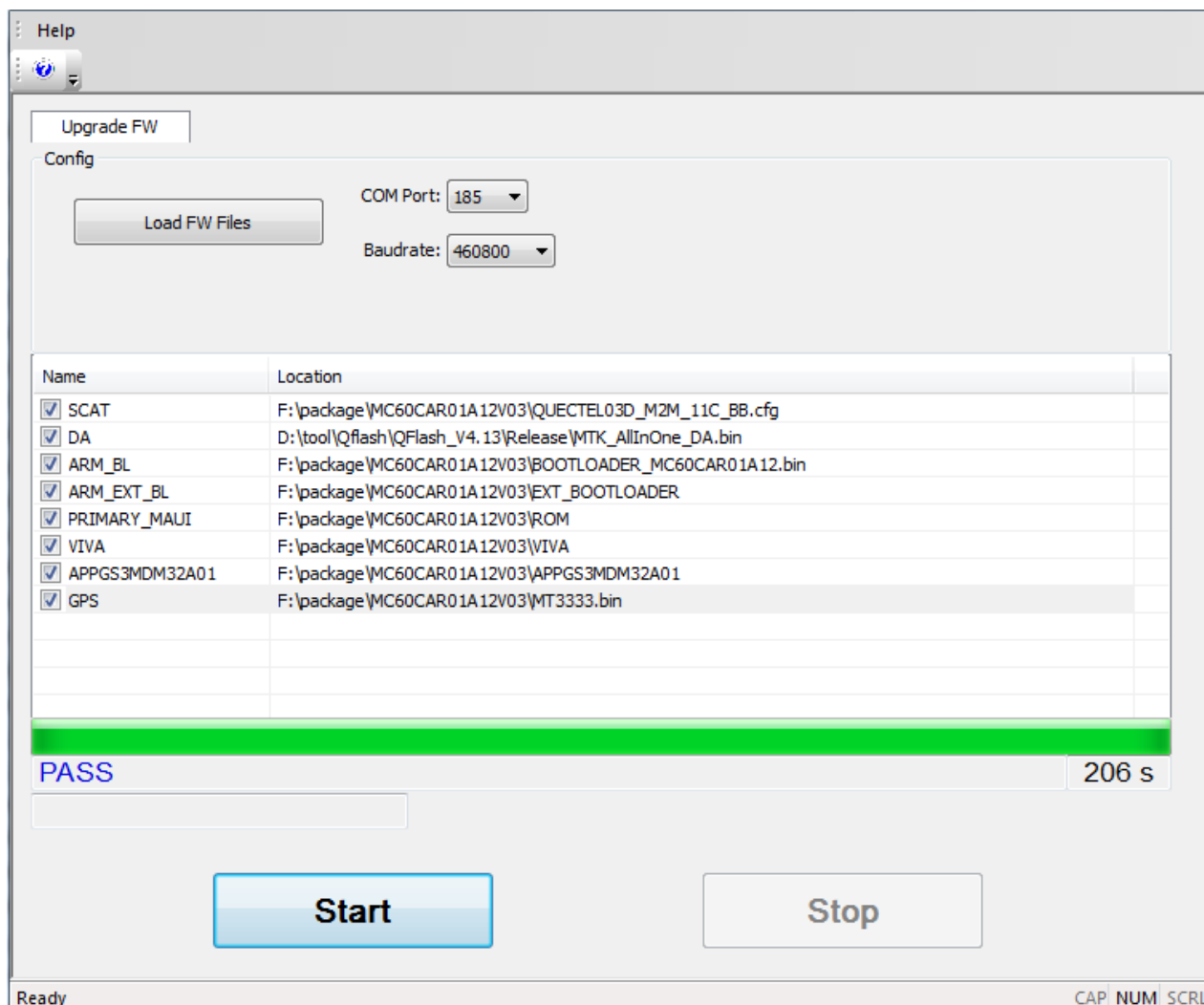


Figure 18: Firmware Upgraded Successfully

2.4. MBN Function

At present, QFlash only supports MBN upgrade function for BG96, the operating procedure is as follows:

Step 1: Click the “**COM Port**” drop-down list and select the COM port that will be used to upgrade the firmware, as shown in the following figure.

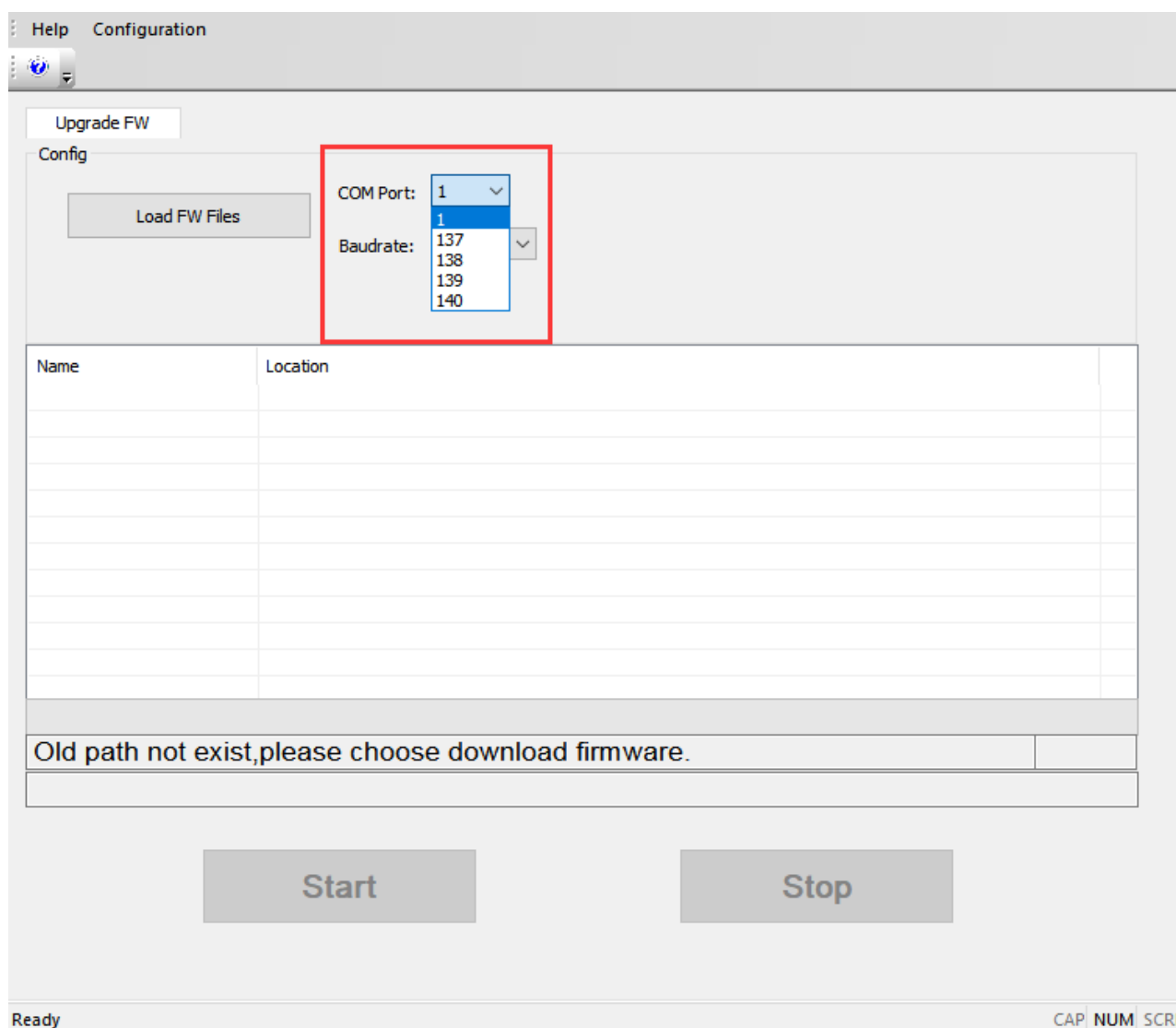


Figure 19: Select the Serial Port of BG96 Module

Step 2: Click the “Load FW Files” button and select the firmware file with the extension *.mbn* to download to the module.

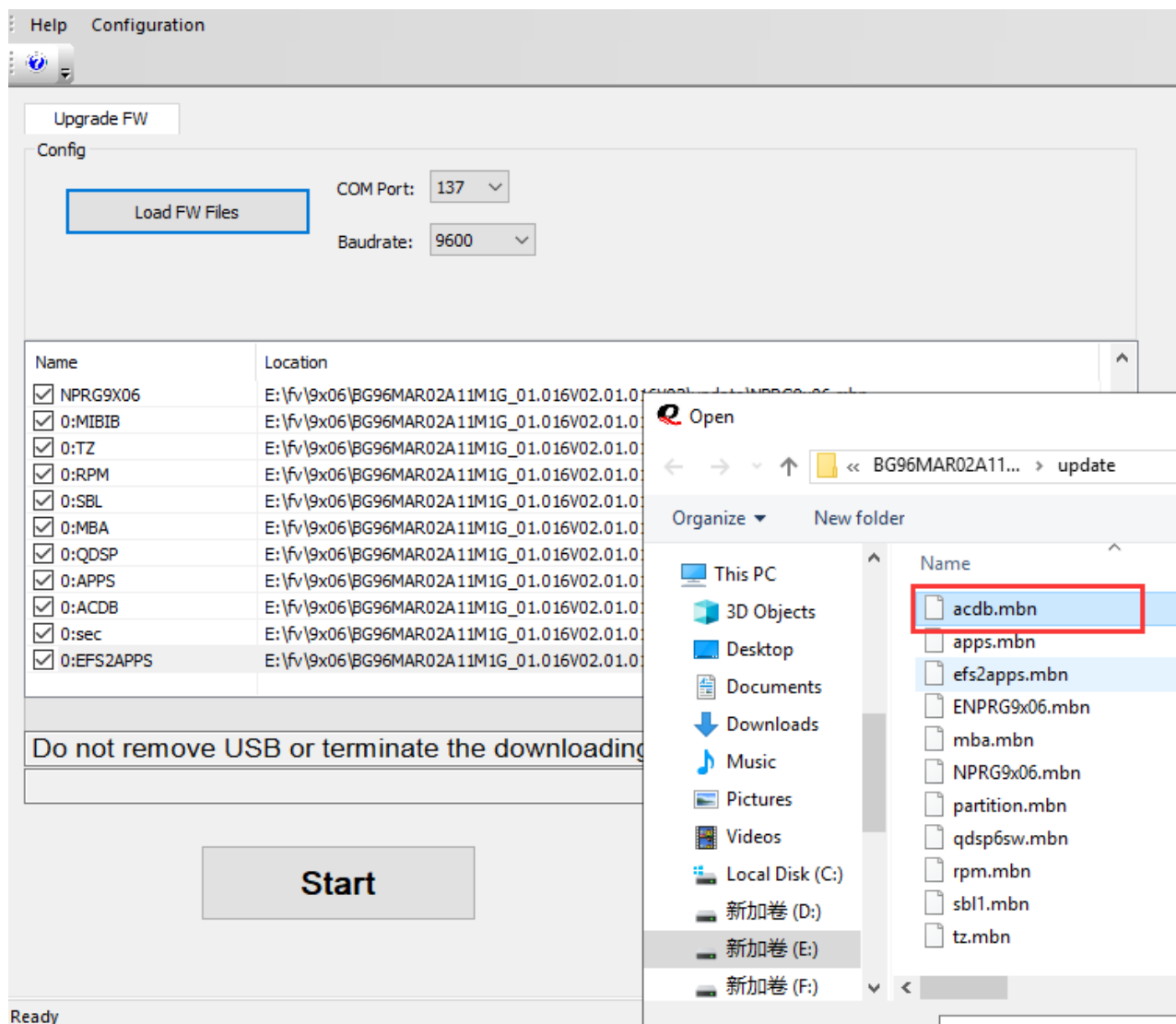


Figure 20: Select the File to be Downloaded

Step 3: Click the “**Start**” button and the prompt “Do you need MBN autosel feature enabled by default” will be popped out.

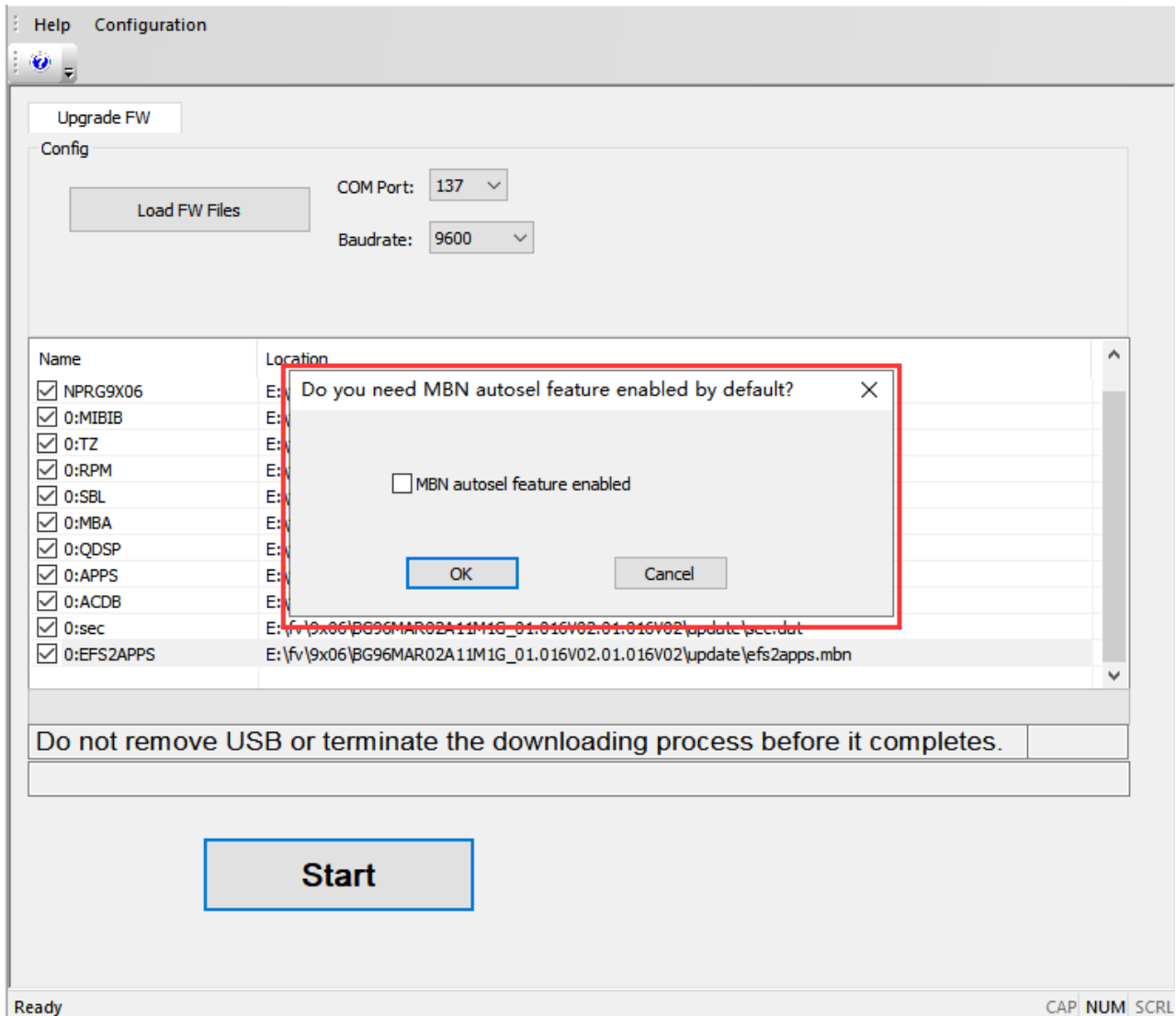


Figure 21: Select “MBN autosel function”

NOTES

1. Make sure there is *mbn* folder in the selected firmware version package before upgrading.
2. Check “**MBN autosel feature enabled**” to turn on MBN automatic selection function, otherwise it will be disabled. Either by clicking “**OK**” button after checking “**MBN autosel feature enabled**”, or by clicking “**Cancel**” with it left unchecked can you enable MBN upgrade function.

Step 4: “PASS” will be shown on the interface after the firmware has been successfully upgraded, as shown in the following figure.

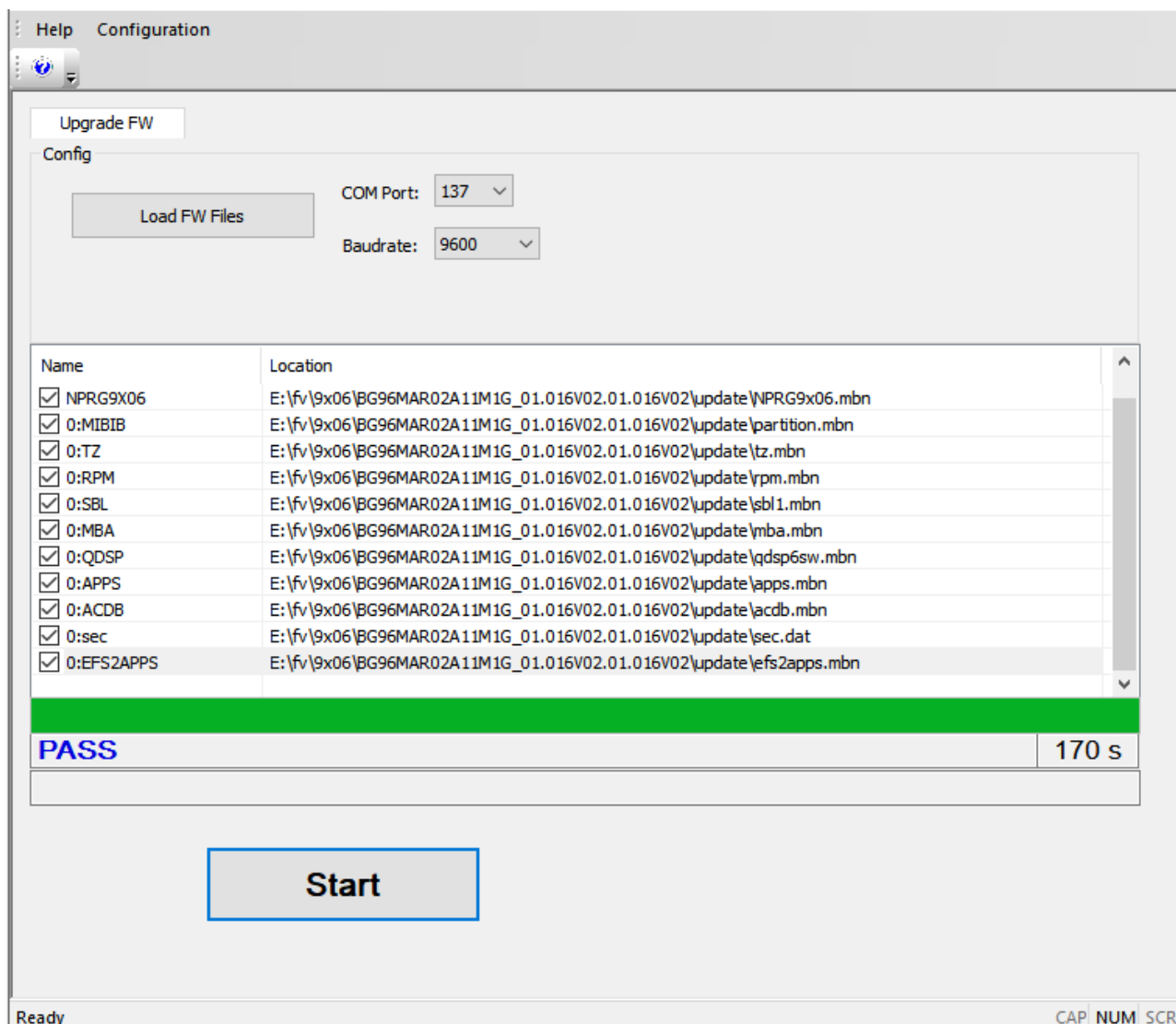


Figure 22: MBN Upgraded Successfully for BG96

2.5. Abnormalities

Abnormalities may be caused by the incorrect baud rate, damaged EVB/TE-B or invalid files, etc. The following illustrates some common abnormalities.

2.5.1. Selected a Wrong Serial Port

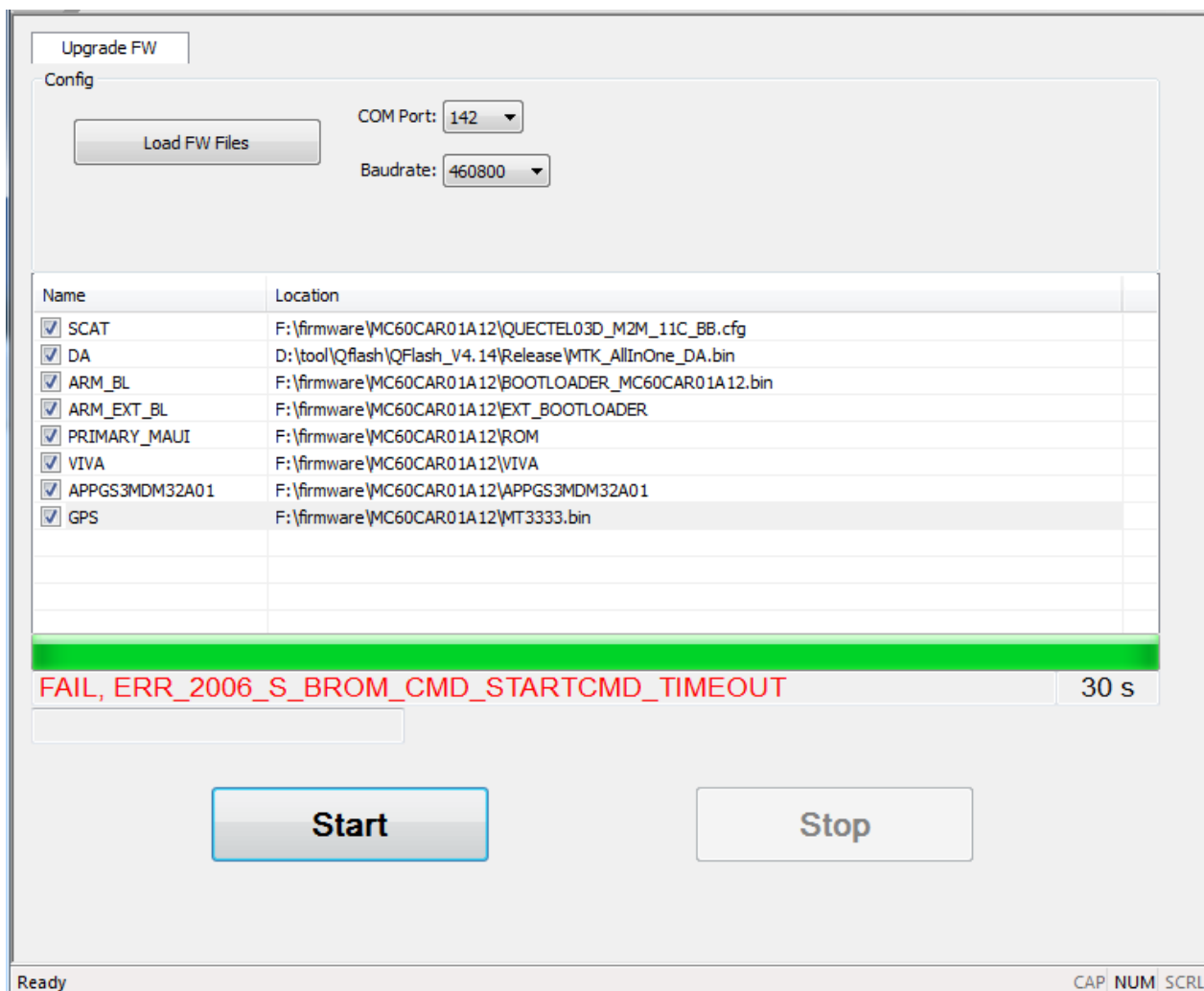


Figure 23: Connected to a Wrong Serial Port (M10/M66/M72/M80/M85/M95/MC60)

NOTE

After selecting a correct serial port, if M10, M66, M72, M80, M85, M95 and MC60 modules are not restarted, the error message will be the same as that of selecting a wrong serial port.

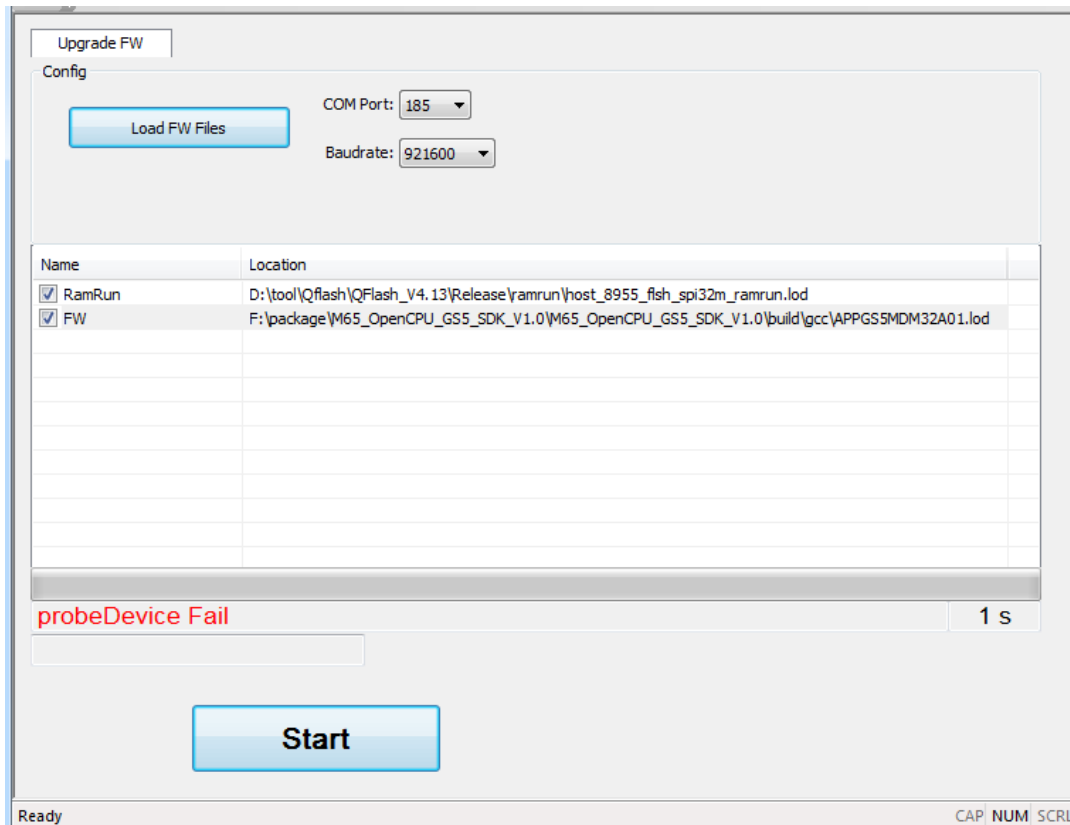


Figure 24: Connected to a Wrong Serial Port (M65)

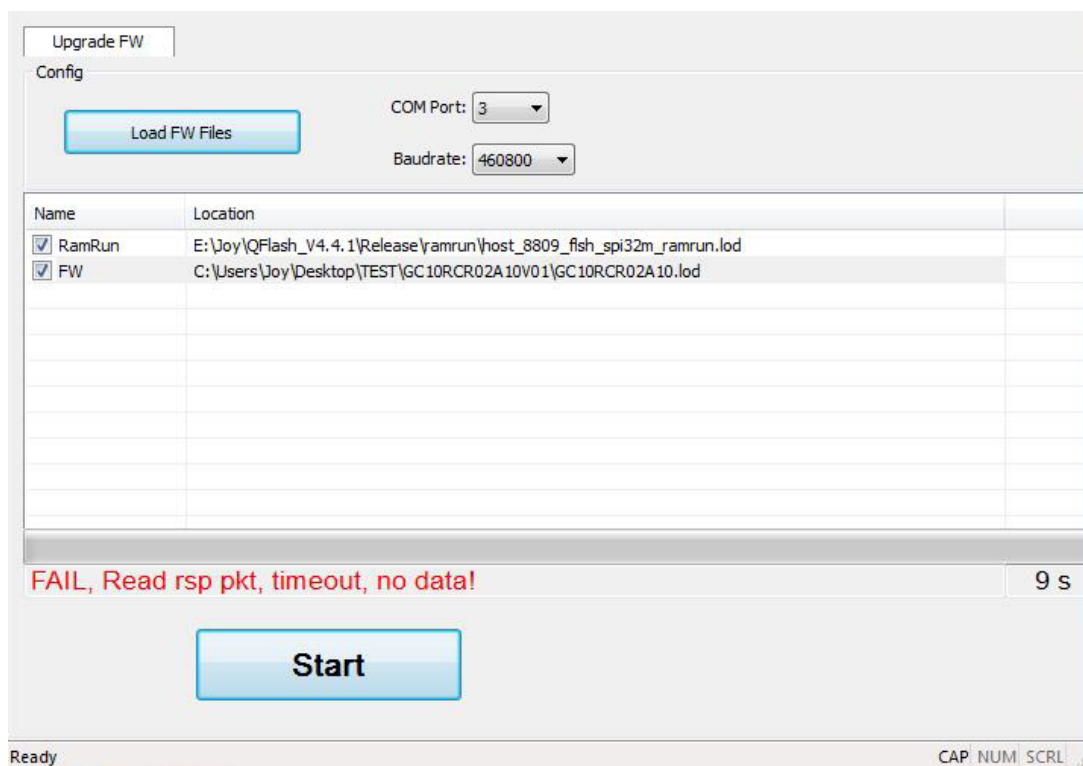


Figure 25: Connected to a Wrong Serial Port (GCxx)

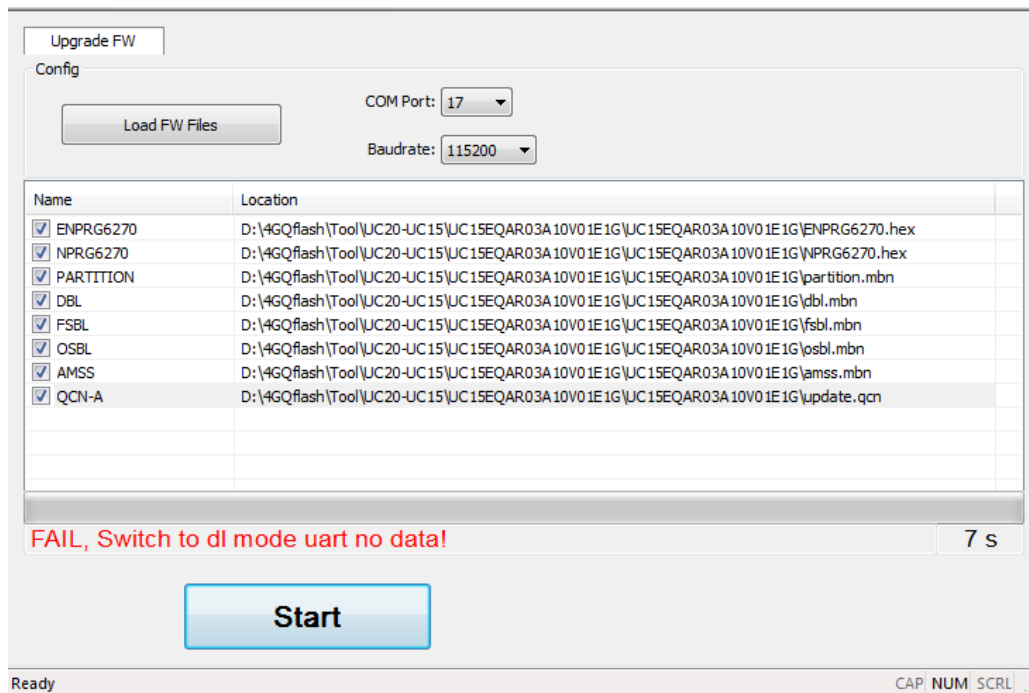


Figure 26: Connected to a Wrong Serial Port (UCxx)

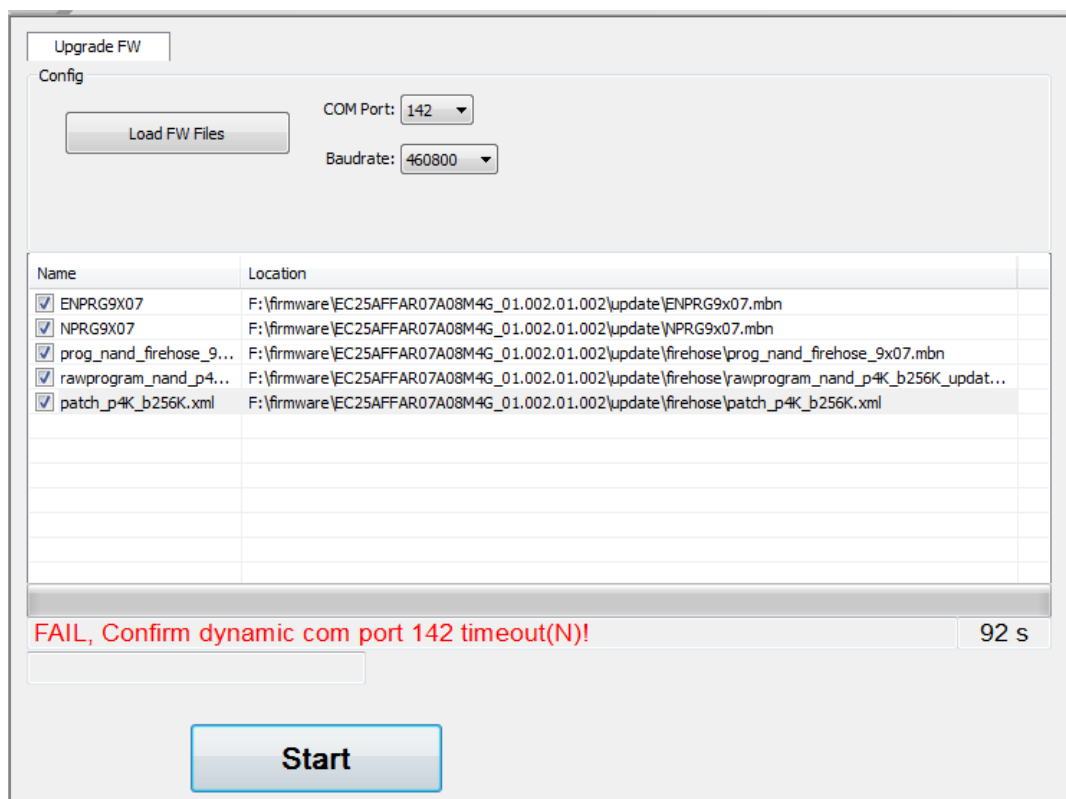


Figure 27: Connected to a Wrong Serial Port
(ECxx/AGxx/EG9x/Ex06/EM05/BGxx/EM12/RG500Q/RM500Q-GL)

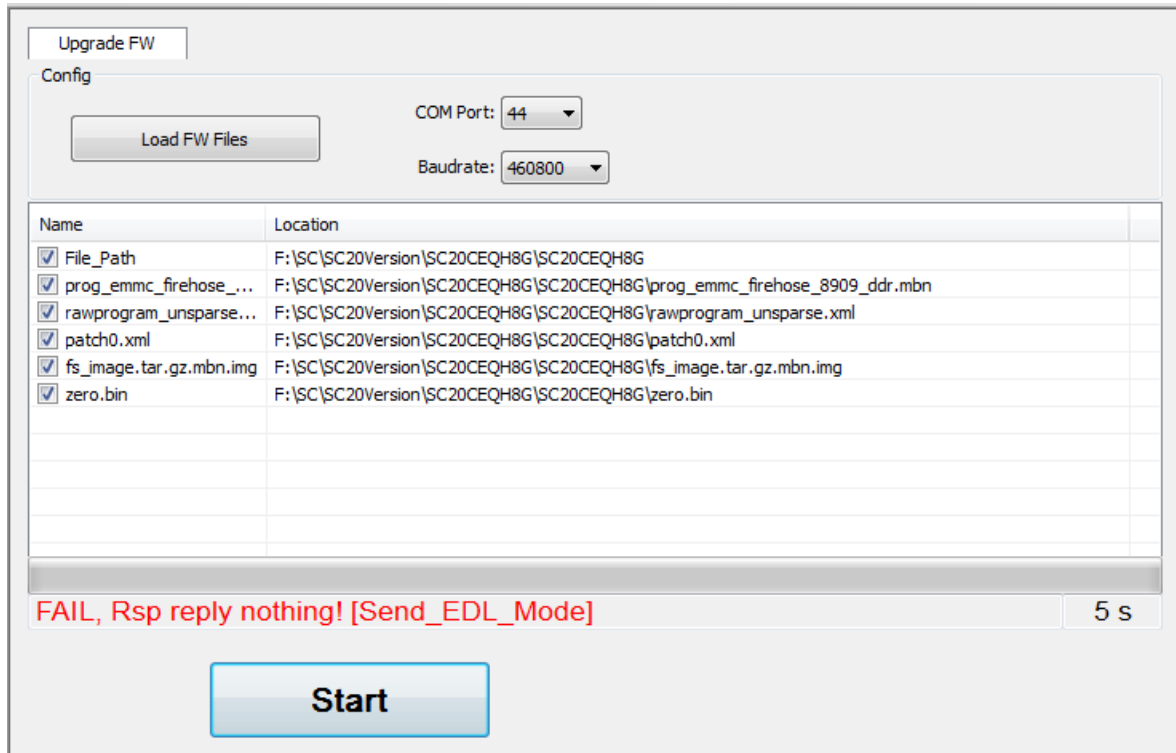


Figure 28: Connected to a Wrong Serial Port (SCxx)

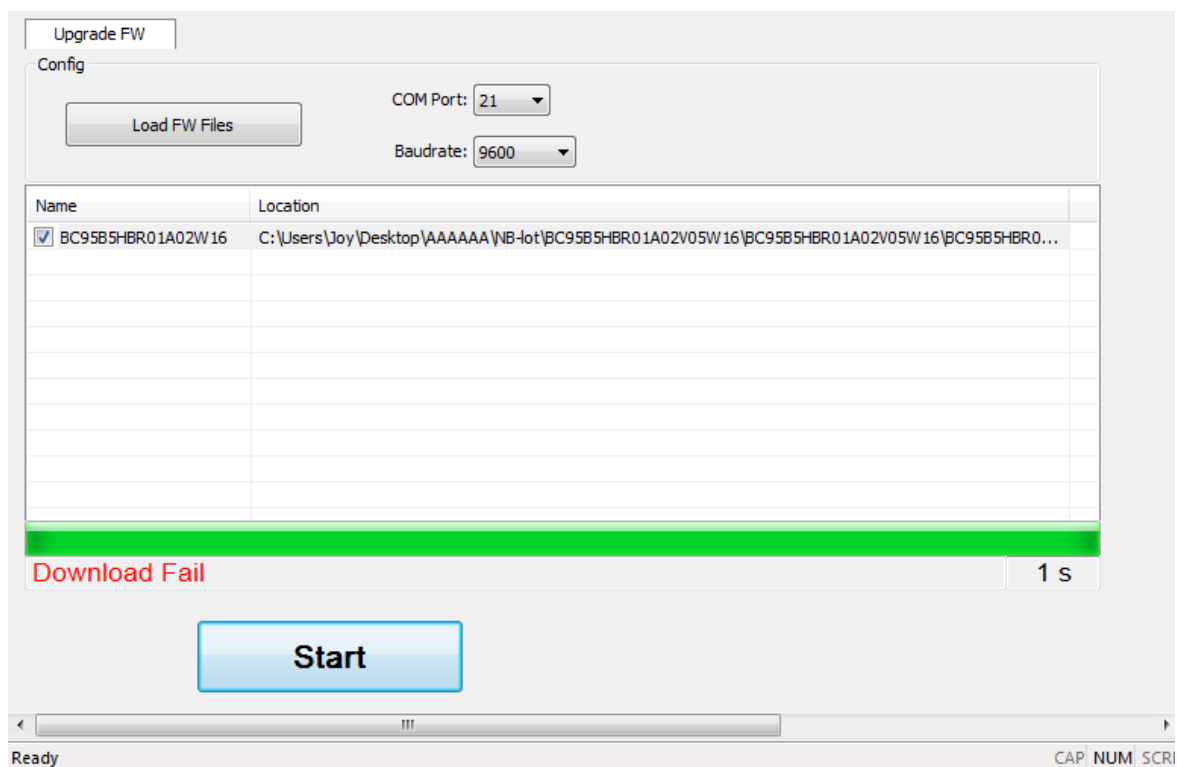


Figure 29: Connected to a Wrong Serial Port (BCxx)

2.5.2. Connected to an Occupied Serial Port

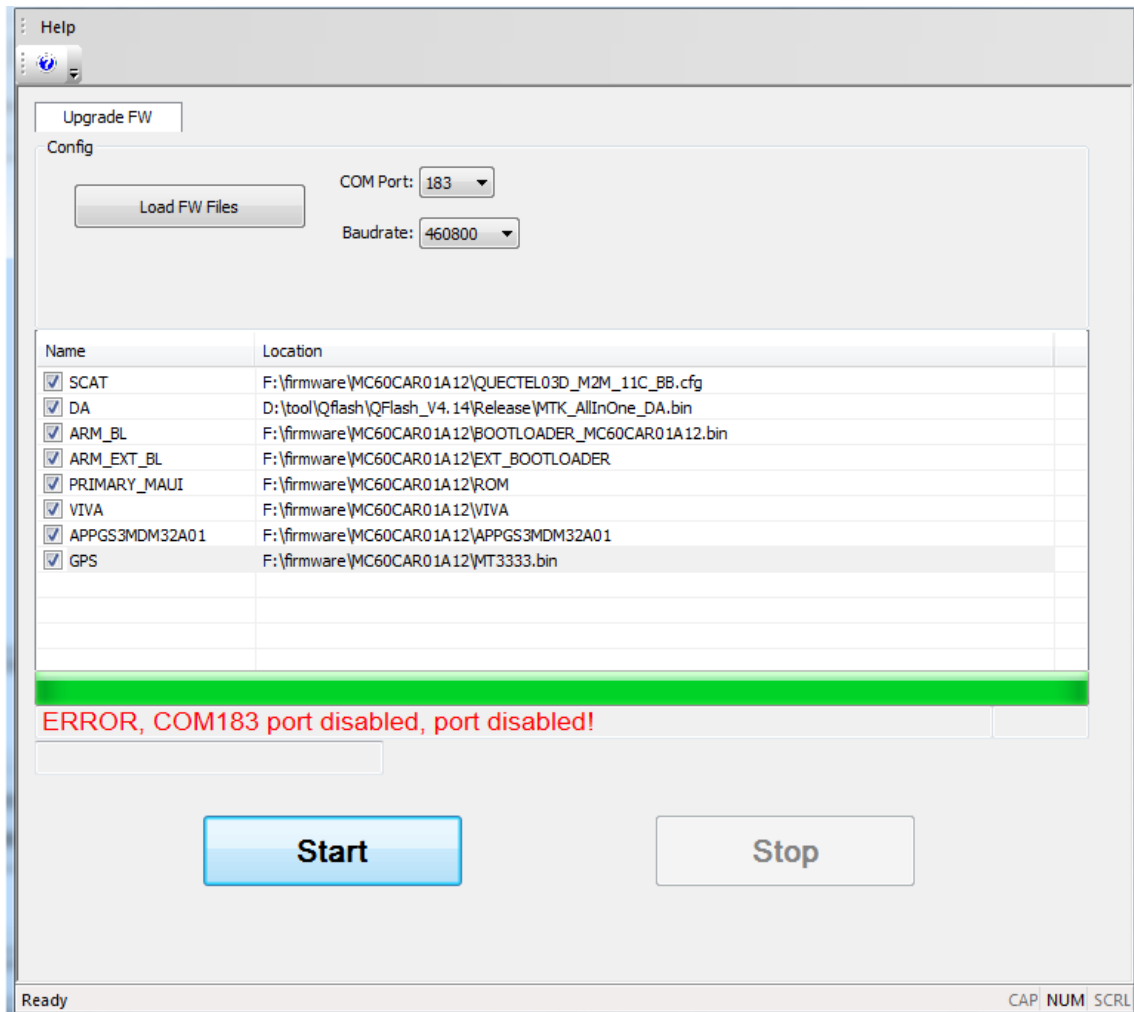


Figure 30: Connected to an Occupied Serial Port (M10/M66/M72/M80/M85/M95/MC60)

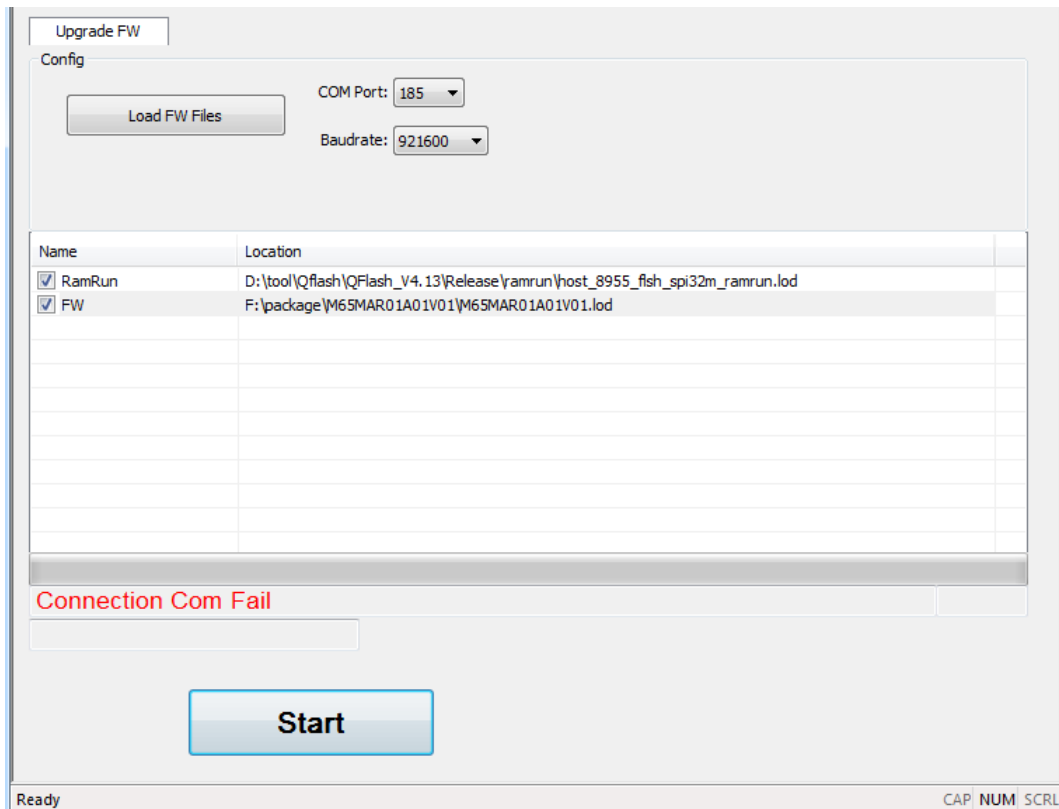


Figure 31: Connected to an Occupied Serial Port (M65)

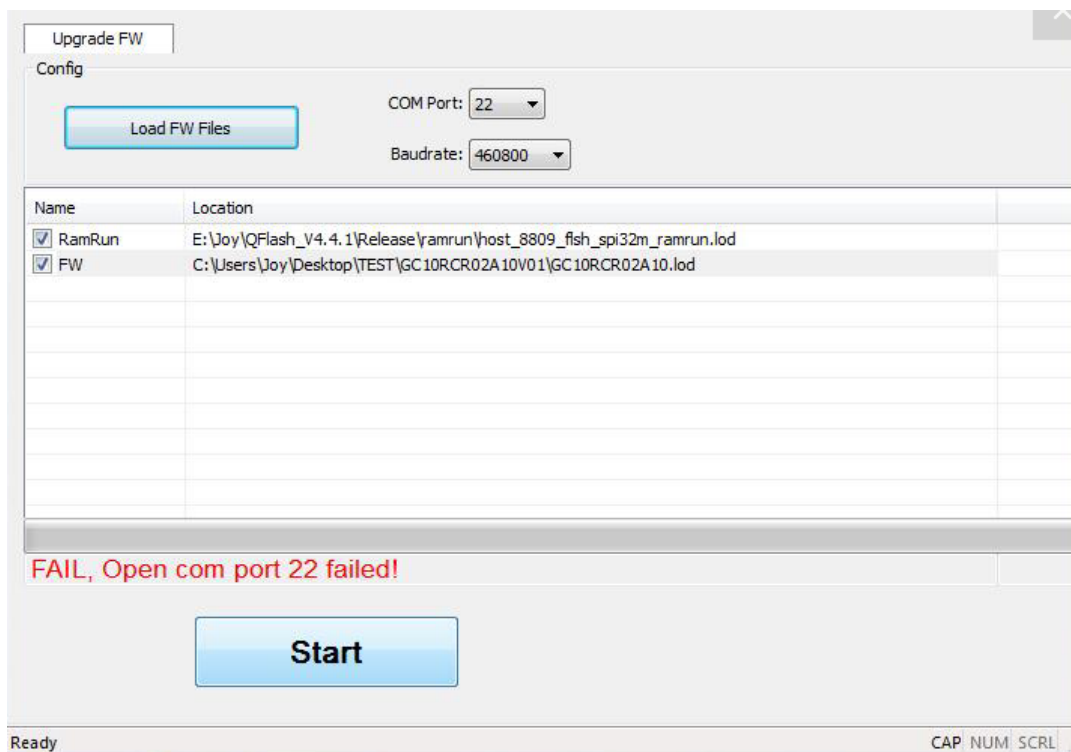


Figure 32: Connected to an Occupied Serial Port (GCxx)

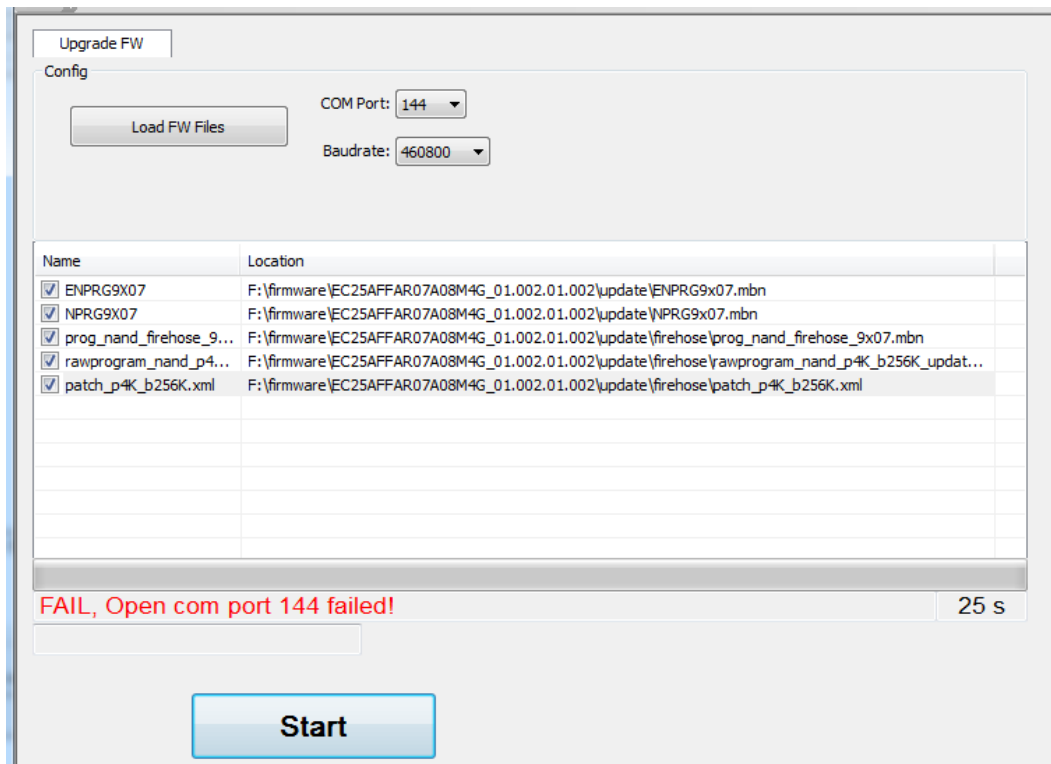


Figure 33: Connected to an Occupied Serial Port (UCxx/ECxx/EG9x/Ex06/SCxx/EM05/AGxx/BGxx/EM12/RG500Q/RM500Q-GL)

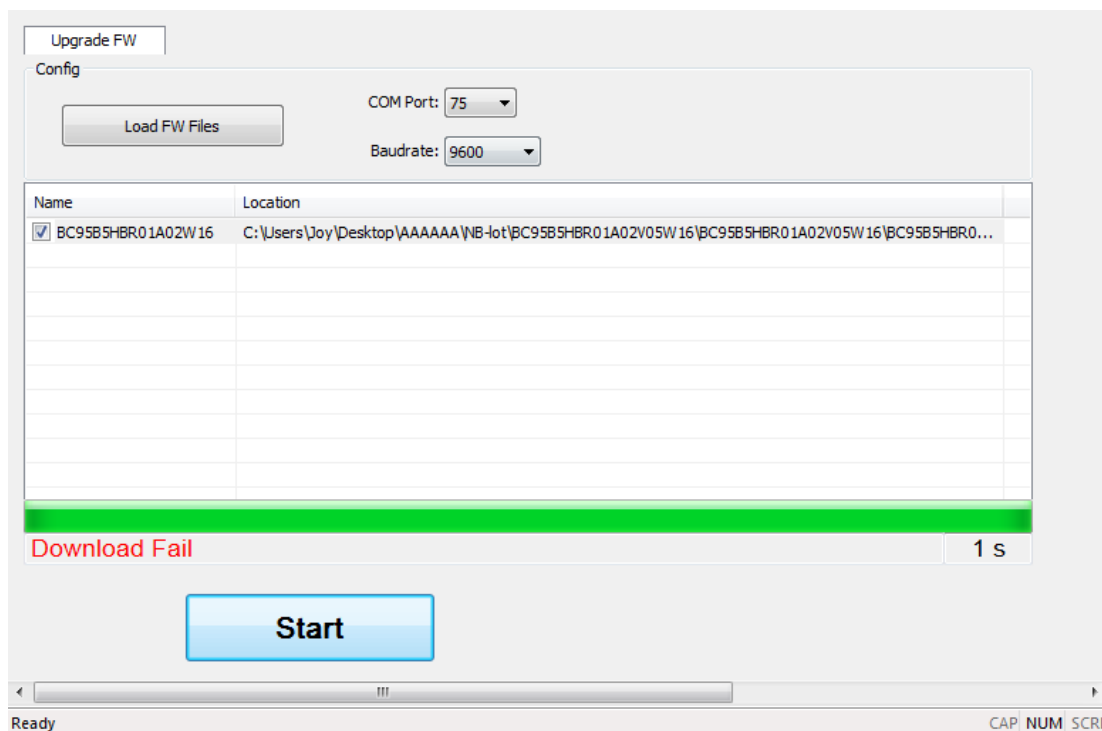


Figure 34: Connected to an Occupied Serial Port (BCxx)

2.5.3. Selected an Unsupported Baud Rate

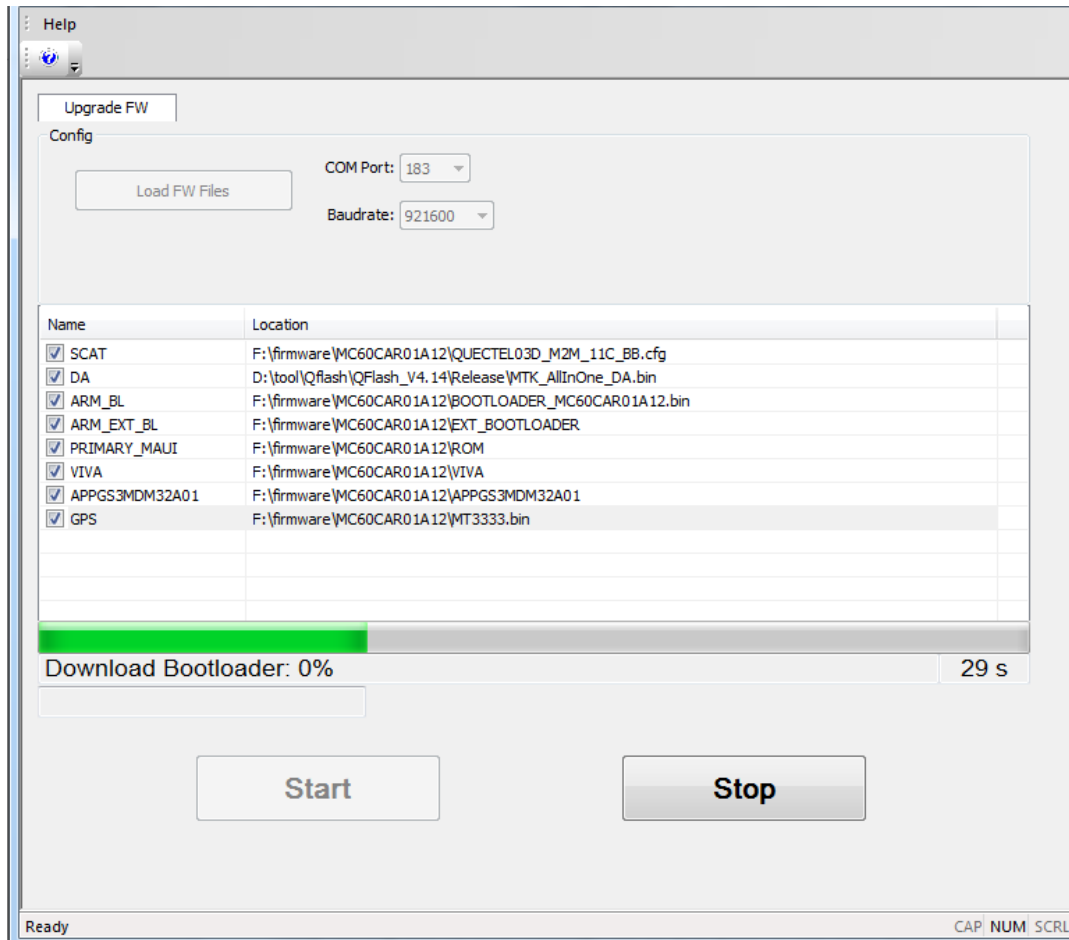


Figure 35: Selected an Unsupported Baud Rate (M10/M66/M72/M80/M85/M95/MC60)

NOTE

For M10, M66, M72, M80, M85, M95 or MC60, if an unsupported baud rate is selected, the tool will stop running and no error message will be prompted. In such a case, please click the “**Stop**” button to re-select a supported baud rate to restart with.

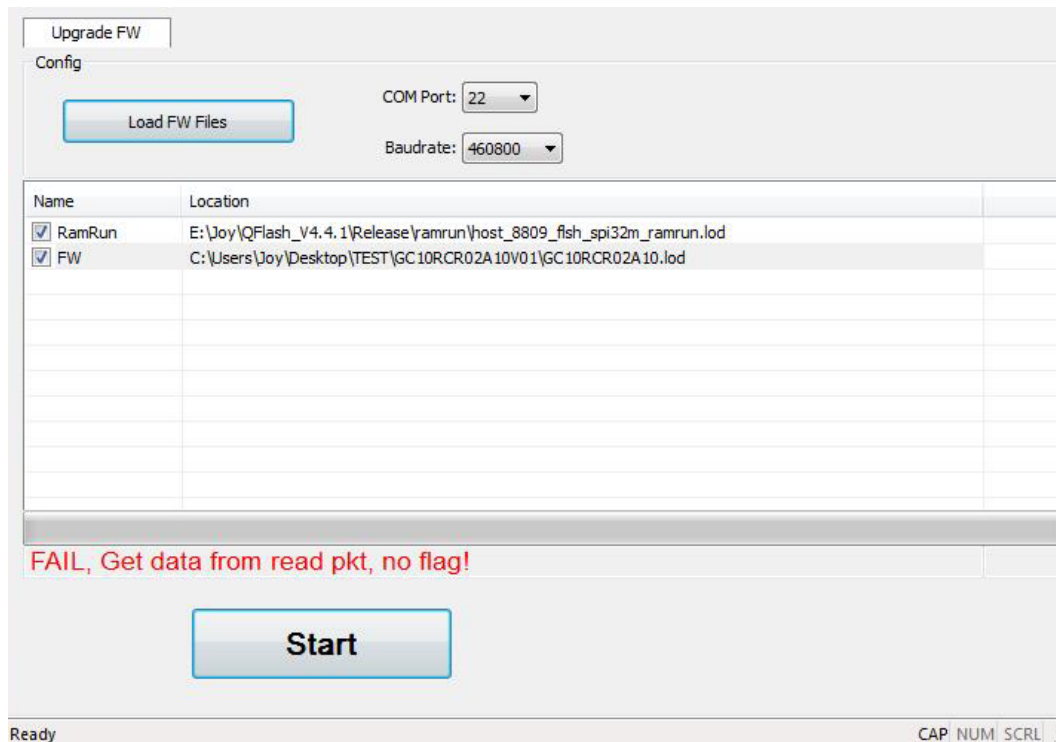


Figure 36: Selected an Unsupported Baud Rate (GCxx)

2.5.4. Selected an Invalid FW File

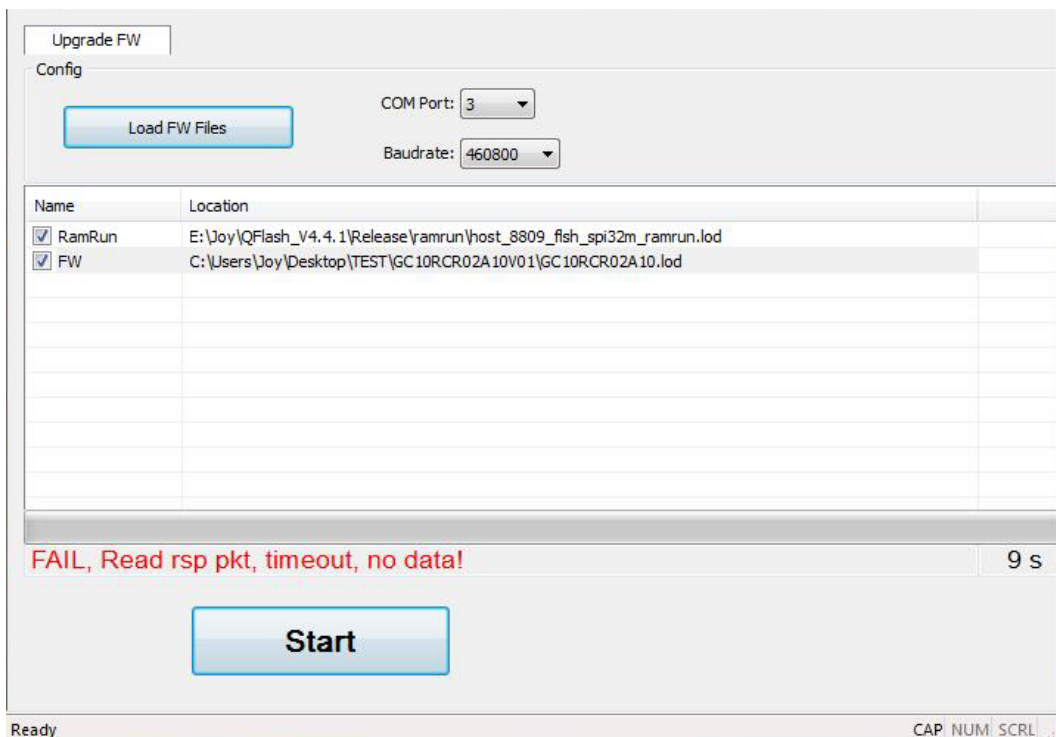


Figure 37: Selected an Invalid FW File (M10/M66/M72/M80/M85/M95/MC60)

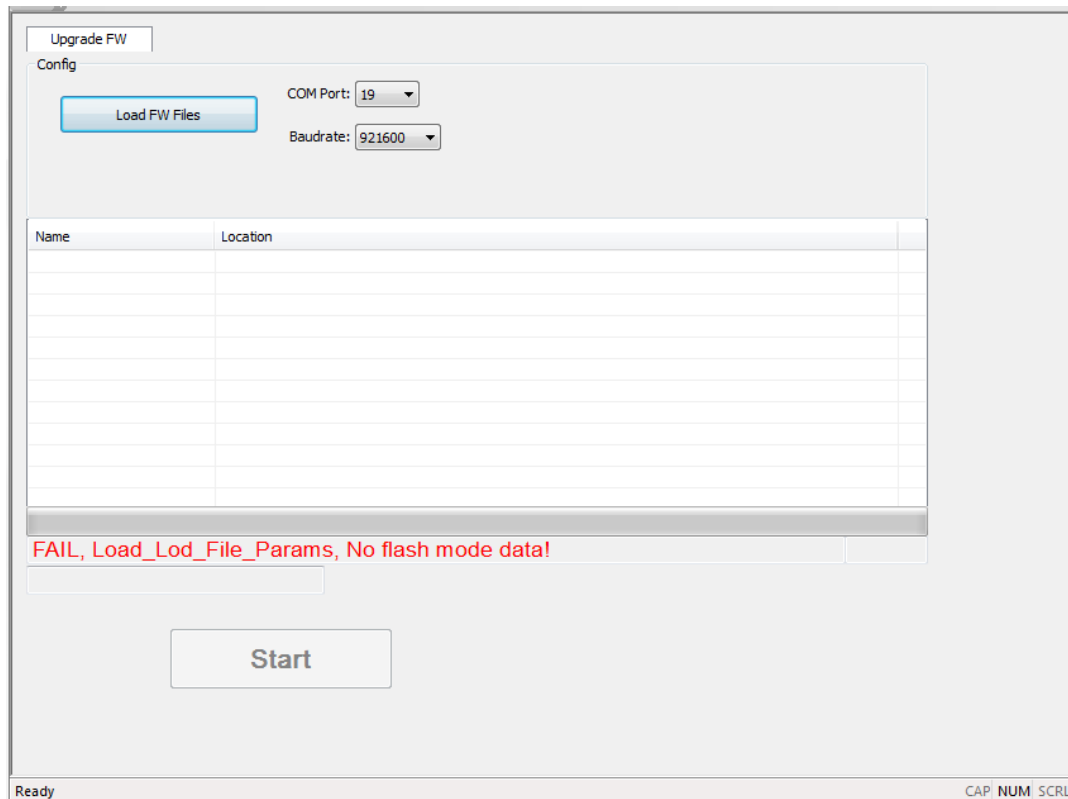


Figure 38: Selected an Invalid FW File (M65)

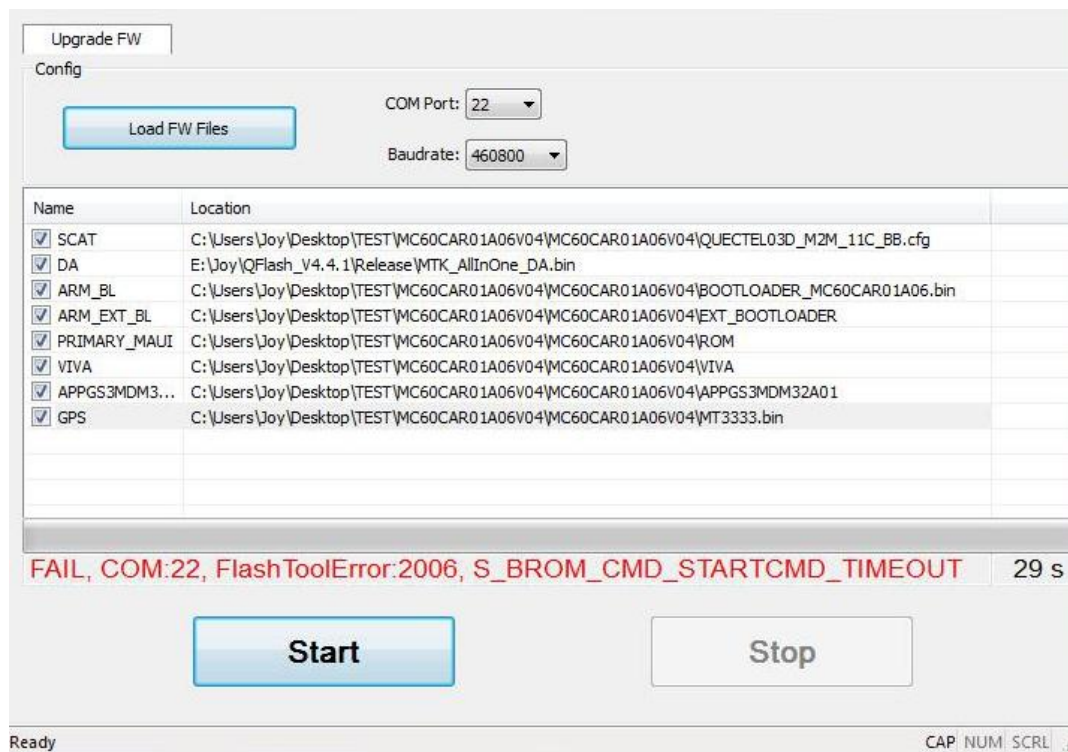


Figure 39: Selected an Invalid FW File (GCxx)

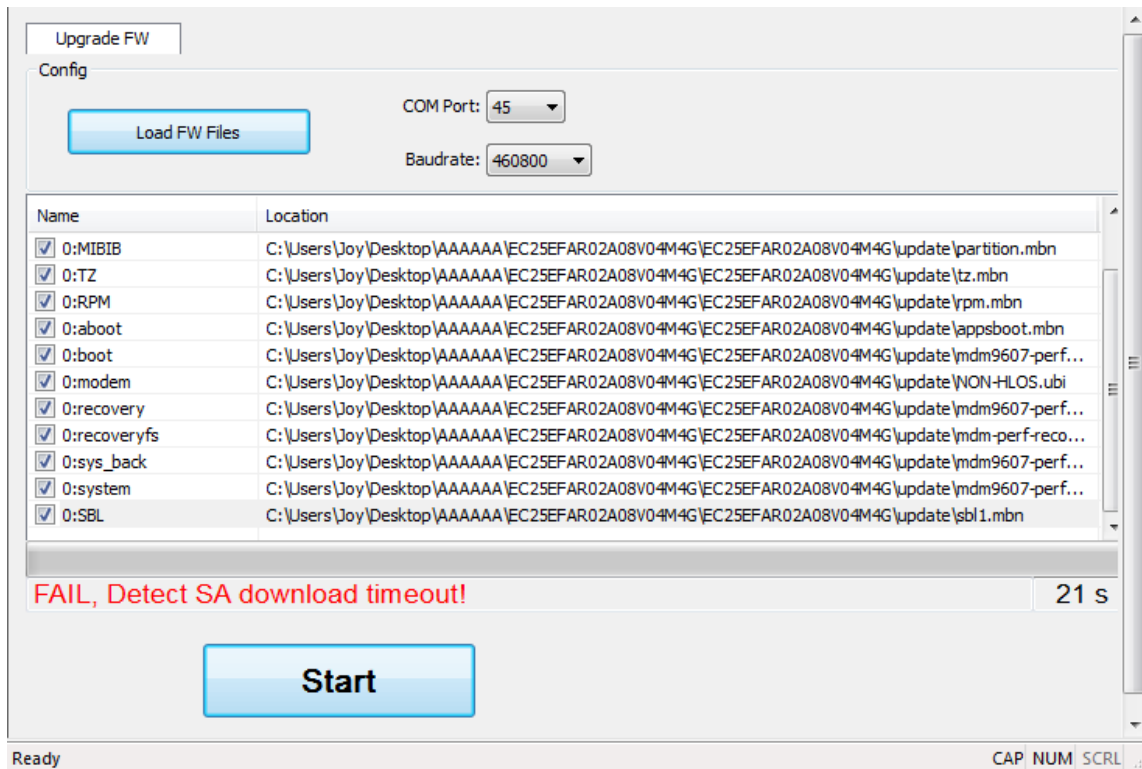


Figure 40: Selected an Invalid FW File (UCxx)

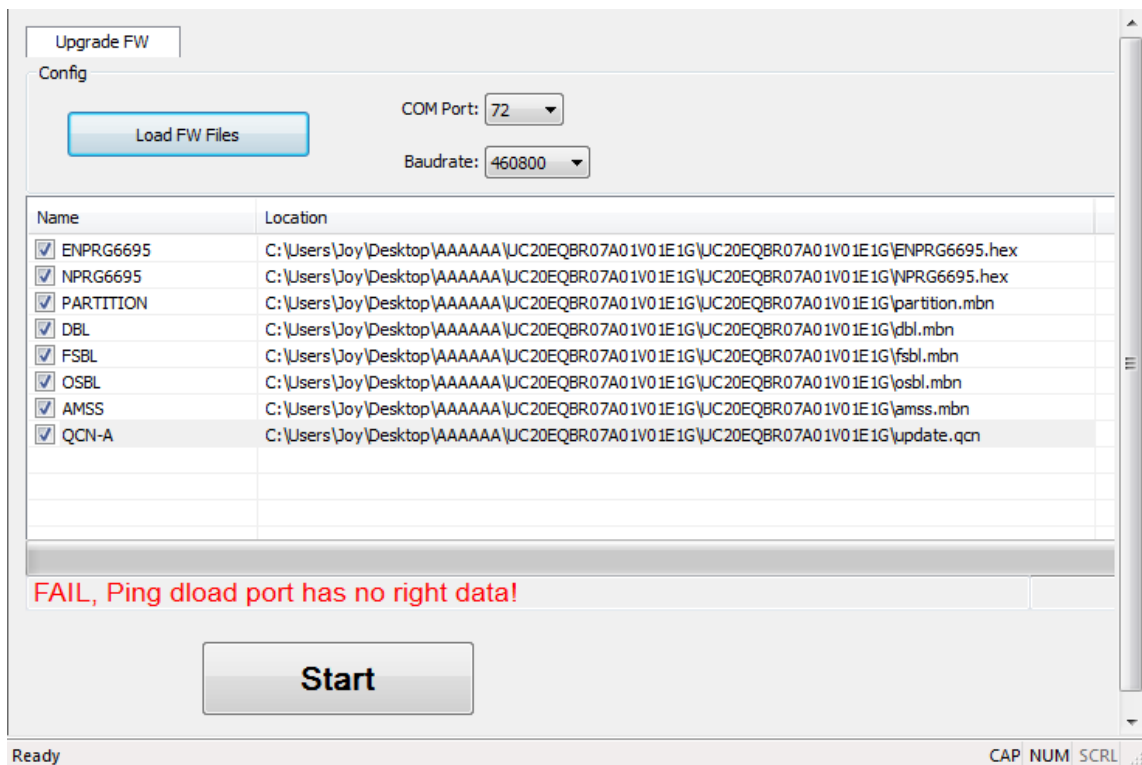


Figure 41: Selected an Invalid FW File (ECxx/EG9x)

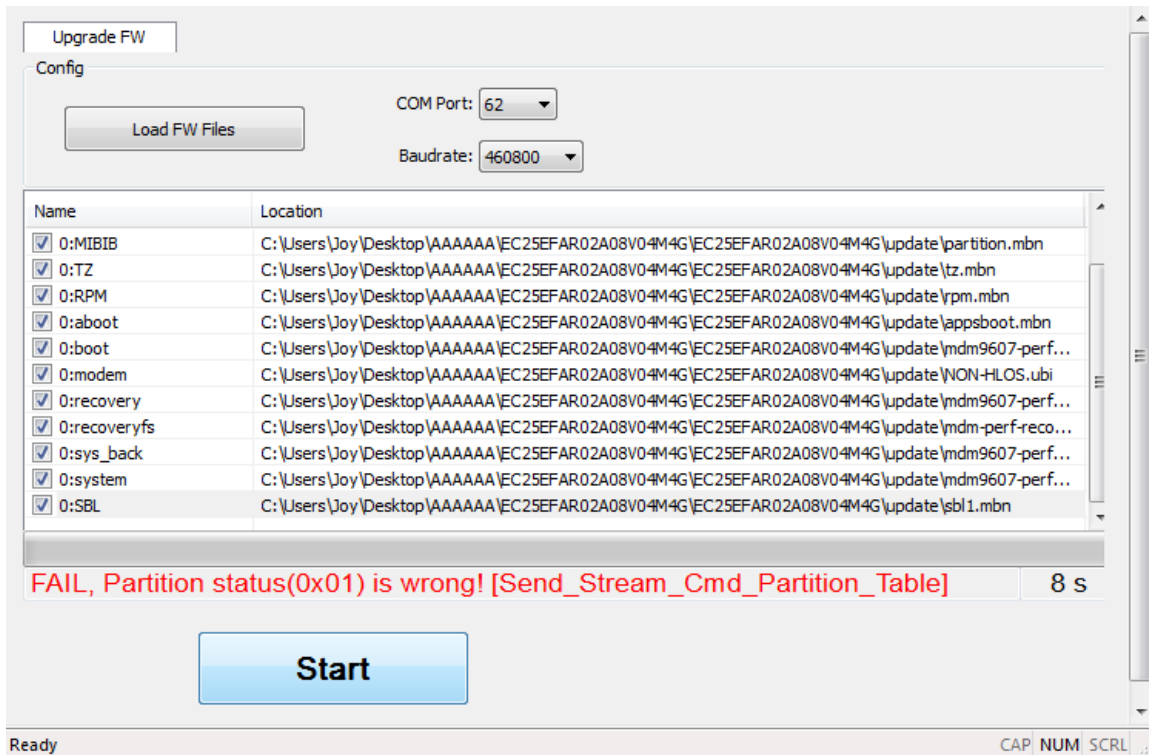


Figure 42: Selected an Invalid FW File (Ex06/AGxx/BG96/EM12)

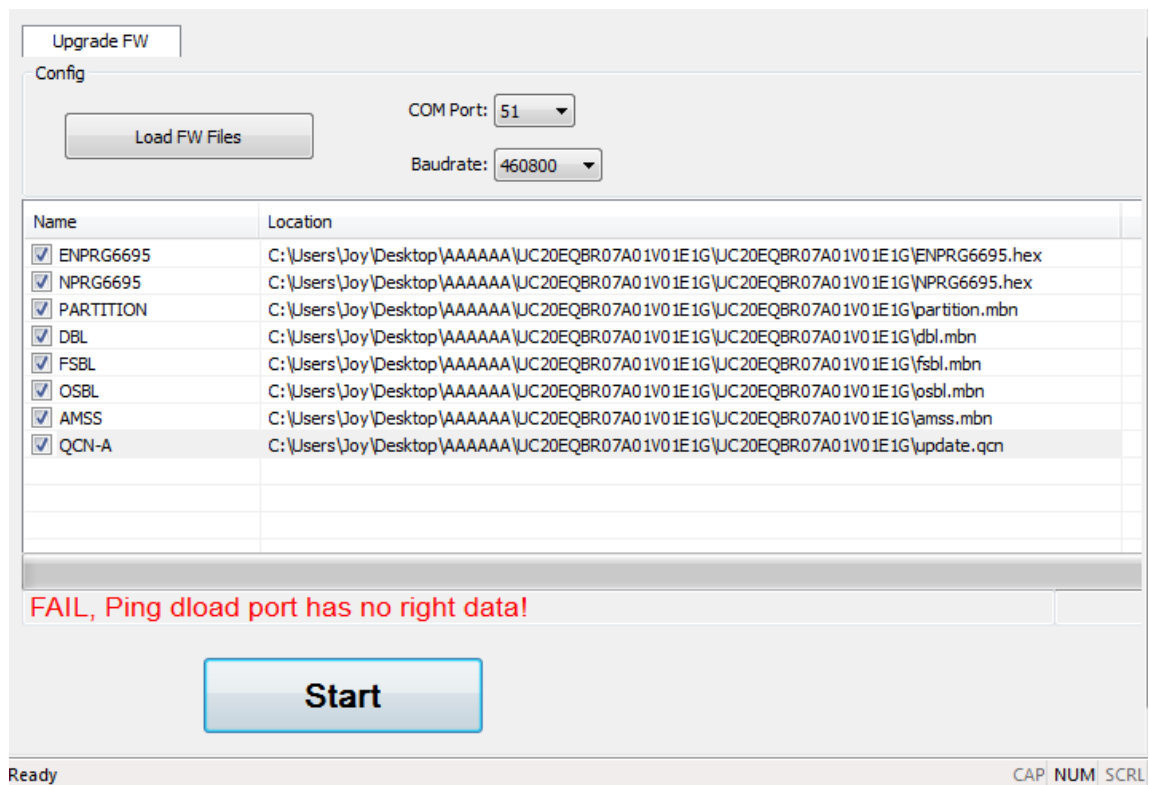


Figure 43: Selected an Invalid FW File (EM05)

2.5.5. Power Supply is Abnormal

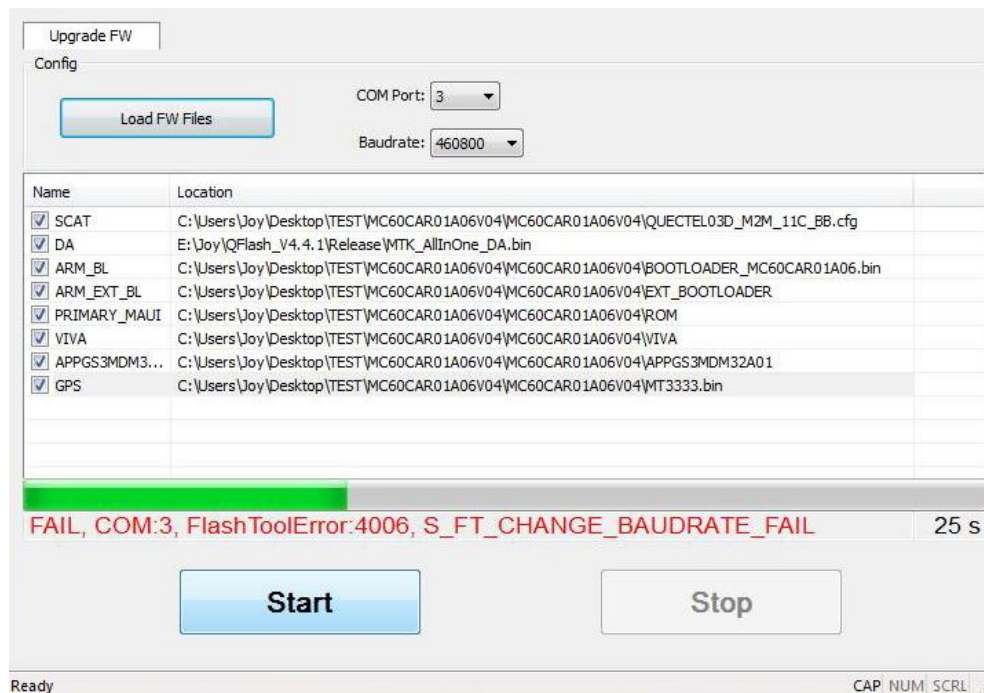


Figure 44: Abnormal Power Supply (M10/M66/M72/M80/M85/M95/MC60)

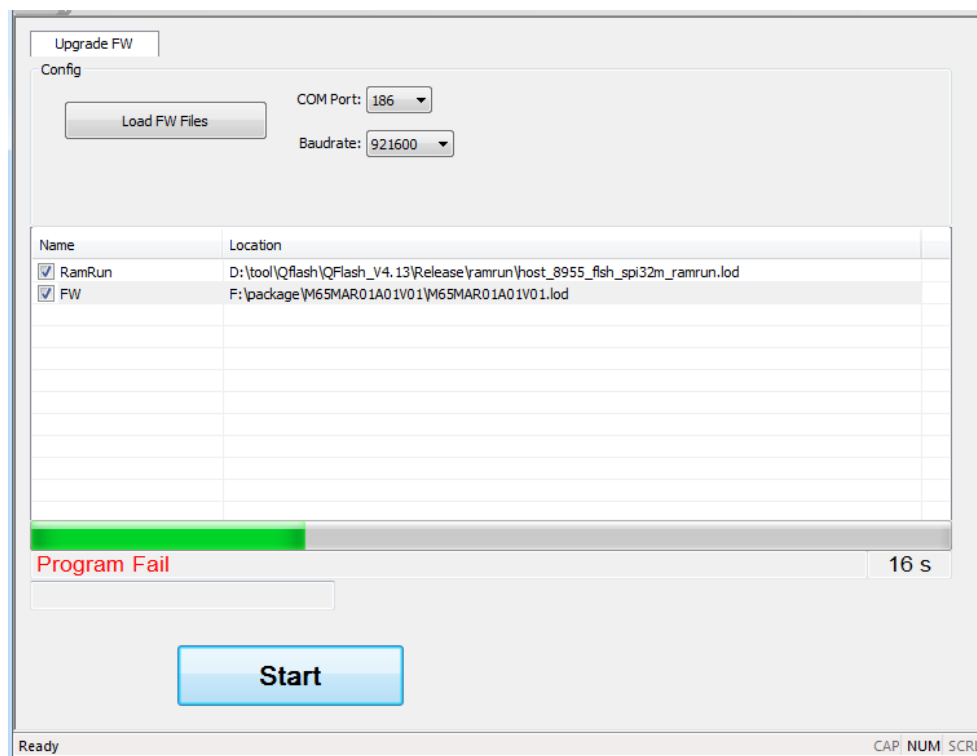


Figure 45: Abnormal Power Supply (M65)

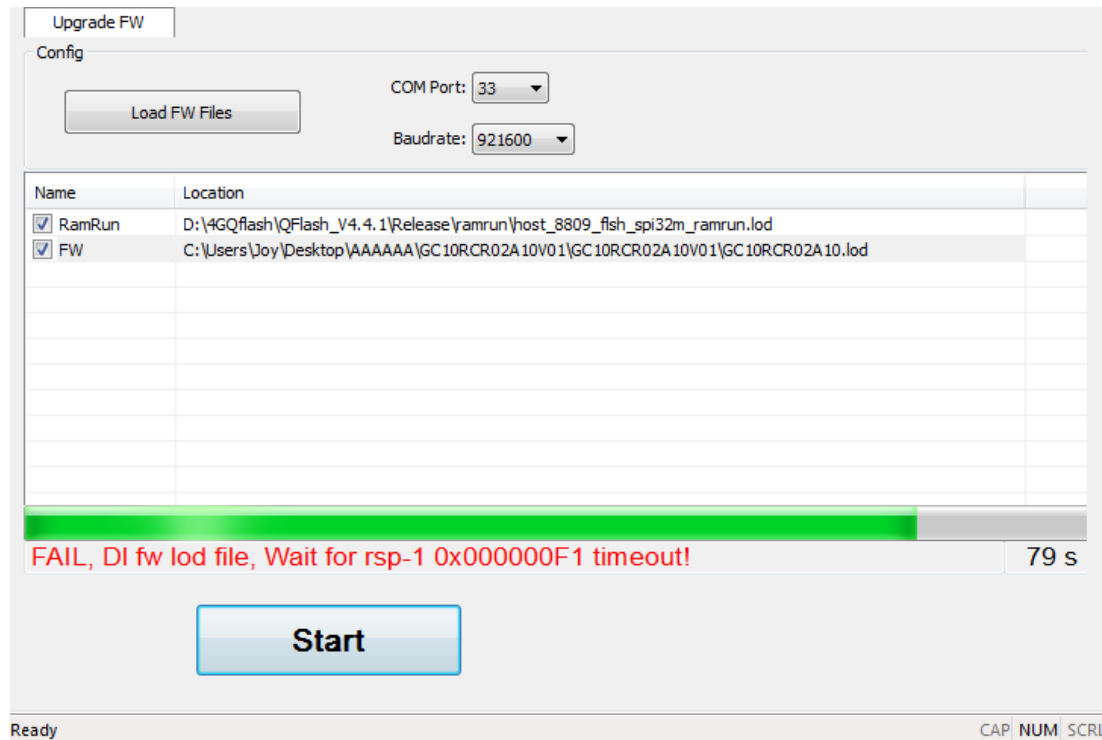


Figure 46: Abnormal Power Supply (GCxx)

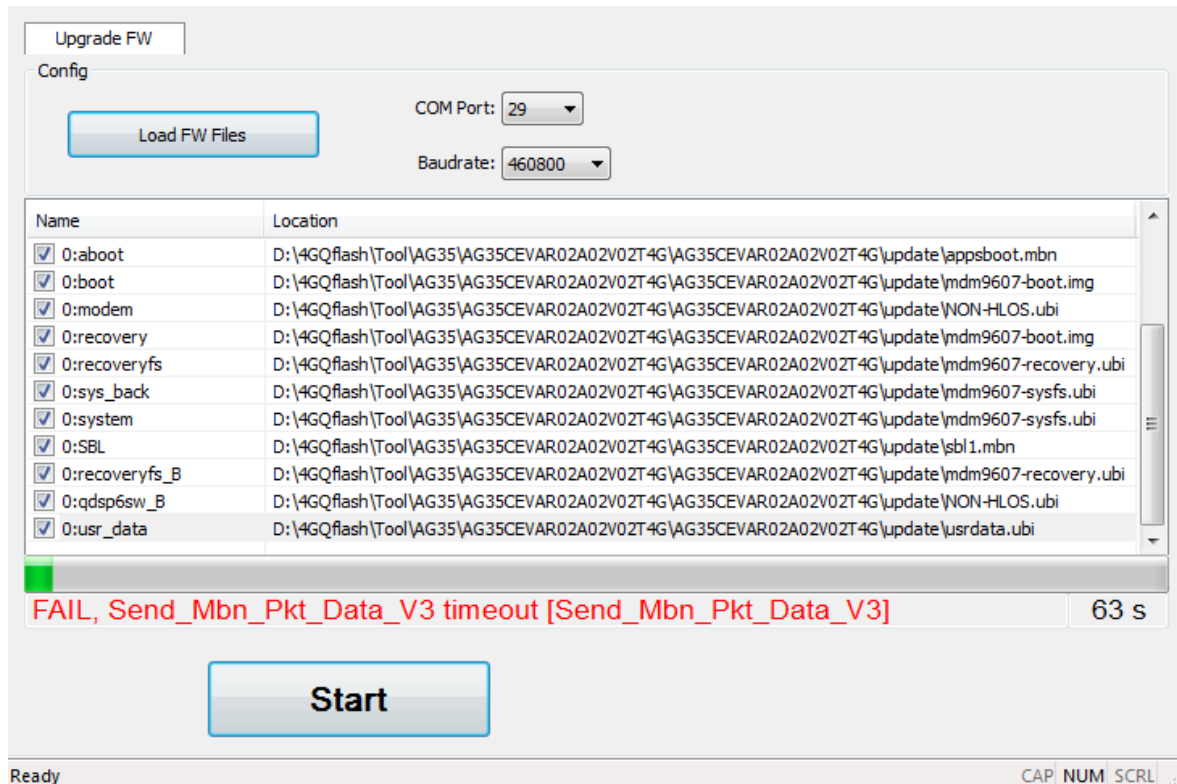


Figure 47: Abnormal Power Supply
(UCxx/ECxx/EG9x/Ex06/EM05/AGxx/BGxx/EM12/RG500Q/RM500Q-GL)

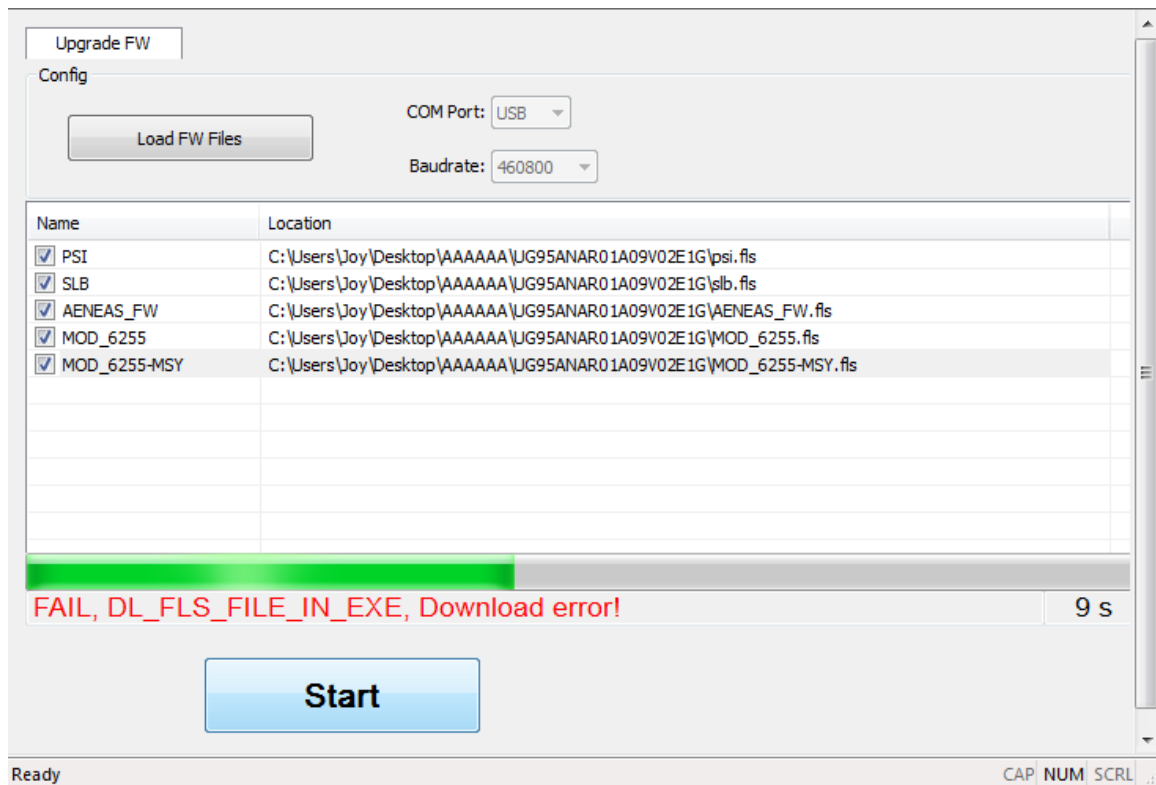


Figure 48: Abnormal Power Supply (UGxx)

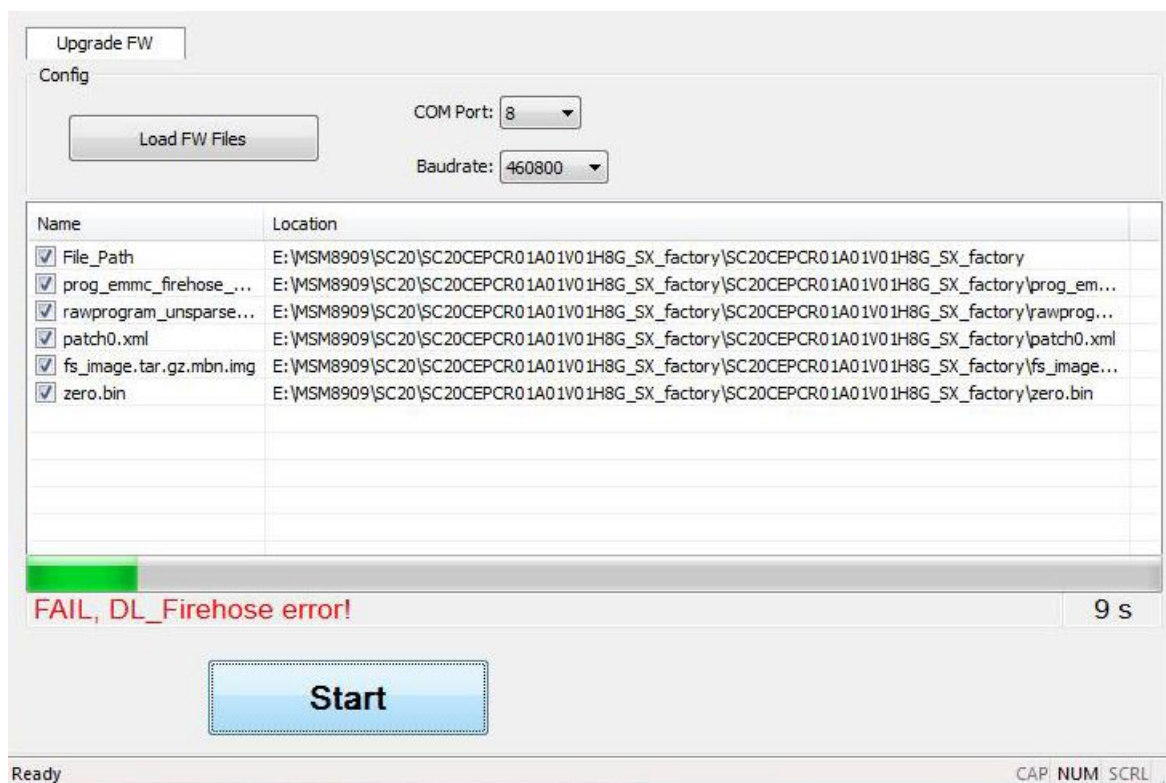


Figure 49: Abnormal Power Supply (SCxx)

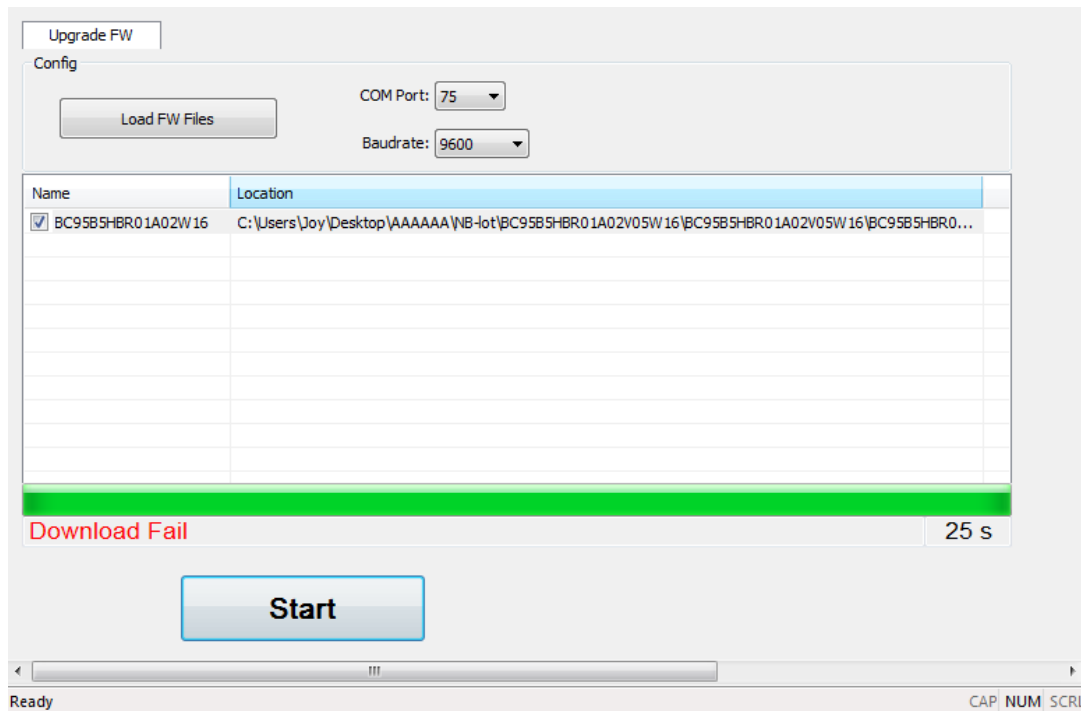


Figure 50: Abnormal Power Supply (BCxx)

2.5.6. USB to RS-232 Converter Cable is Abnormal

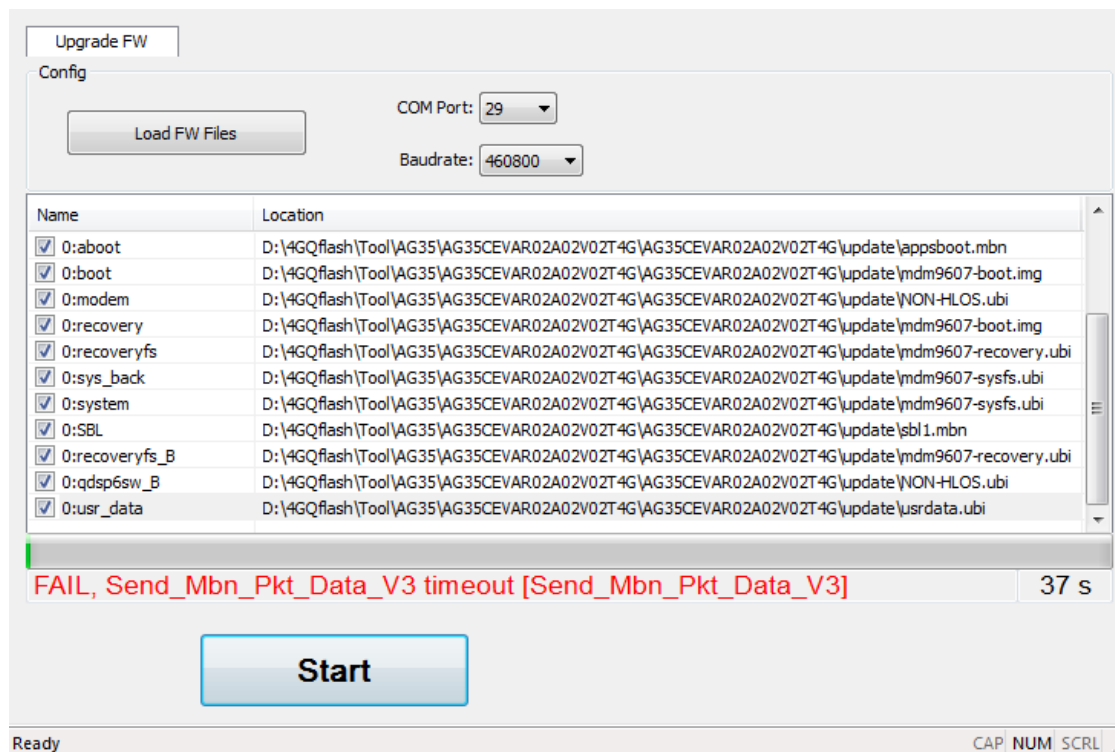


Figure 51: Abnormal USB to RS-232 Converter Cable